

EN

Original Instructions
Version 2 - February 2024

DRAPER[®]

34kW

INFRARED DIESEL SPACE HEATER

01774



**UK
CA** **CE**

1. Preface

These are the original product instructions. This document is part of the product; retain it for the life of the product, passing it on to subsequent holders. Read this manual in full before attempting to assemble, operate, or maintain this product.

This Draper Tools manual describes the purpose of the product and contains all the necessary information to ensure its correct and safe use. Following all the instructions and guidance in this manual will ensure the safety of both the product and the operator and increase the lifespan of the product.

All photographs and drawings within this manual are supplied by Draper Tools to help illustrate correct operation of the product.

Every effort has been made to ensure the information contained in this manual is accurate. However, Draper Tools reserves the right to amend this document without prior warning. Always use the latest version of the product manual.

1.1 Product Reference

User Manual for: Infrared Diesel Space Heater, 124,000 BTU/34 kW

Stock No: 01774

Part No: DSH-IR30-B

1.2 Revisions

Version 1: July 2022
First release

Version 2: February 2024
General content and formatting updates

As our manuals are continually updated, always ensure that the latest version is used.

For the latest version of this manual and the associated parts list, if applicable, please visit

drapertools.com/manuals

1.3 Understanding the Safety Content of This Manual



WARNING! – Situations or actions that may result in personal injury or death.



CAUTION! – Situations or actions that may result in damage to the product or surroundings.

Important: – Information or instructions of particular importance.

1.4 Copyright © Notice

Copyright © Draper Tools Limited.

Permission is granted to reproduce this manual for personal and educational use **ONLY**. Commercial copying, redistribution, hiring, or lending is strictly prohibited.

No part of this manual may be stored in a retrieval system or transmitted in any other form or means without written permission from Draper Tools Limited.

In all cases, this copyright notice must remain intact.

1. Preface	2	9. Spares, Returns and Disposal	16
1.1 Product Reference	2	10. Warranty	17
1.2 Revisions	2	11. Explanation of Symbols	18
1.3 Understanding the Safety Content of This Manual	2		
1.4 Copyright © Notice	2		
2. Contents	3		
3. Product Introduction	4		
3.1 Intended Use	4		
3.2 Specification	4		
4. Health and Safety Information	5-7		
4.1 General Health and Safety Precautions for This Heater	5		
4.2 Additional Safety information for this Heater	5		
4.3 Electrical Safety	6		
4.4 Health and Safety Information for the Use of Diesel and Kerosene Fuel	6		
4.5 Service	6		
4.6 Connection to the Power Supply	7		
5. Identification and Unpacking	8-9		
5.1 Product Overview	8		
5.2 What's in the Box?	9		
5.3 Packaging	9		
6. Preparing the Heater	10-12		
6.1 Assembly	10		
6.2 Acceptable Fuels	11		
6.3 Fuelling the Heater	11		
6.4 Positioning the Heater	11-12		
7. Operating Instructions	13		
7.1 Switching On the Heater	13		
7.2 Switching Off the Heater	13		
7.3 Automatic Power Cut-Outs	13		
8. Maintenance and Troubleshooting	14-16		
8.1 General Maintenance and Storage	14		
8.2 Draining the Fuel	14		
8.3 Fuel Tank Care	14		
8.4 Filter Care	14		
8.5 Nozzle/Spark Plug/Photocell Care & Servicing	14		
8.6 Storing the Heater	14		
8.7 Troubleshooting	15		

3.1 Intended Use

This infrared heater is designed to heat open and well ventilated spaces through the combustion of diesel and kerosene fuels. Supplied with automatic ignition and fitted with a photocell safety device with heat protection.

Read this manual in full before attempting to assemble, operate or maintain the product, and retain it for later use.

3.2 Specification

Stock No.	01774
Part No.	DSH-IR30-B
Motor:	
Rated voltage	230V AC
Rated frequency	50Hz
Rated input	59W
Heat output	34kW/124,000 BTU
Fuel	Diesel/Kerosene
Diesel consumption	2.6L/h
Fuel tank capacity	40L
Net weight	34.7kg
Dimensions	W 695 x H 955 x D 1,205mm

4. Health and Safety Information

Important: Read all the Health and Safety instructions before attempting to operate, maintain or repair this product. Failure to follow these instructions may result in injury or damage to the user or the product.

4.1 General Health and Safety Precautions for This Heater

- This appliance is not suitable for use by children and may not be used by persons with reduced physical, sensory or mental capabilities, or lack of experience or knowledge unless they are supervised or trained in the correct use of the device and fully understand the hazards involved.
 - **DO NOT** allow children to play with the appliance.
 - Cleaning and maintenance **MUST** be carried out by or under the supervision of experienced and knowledgeable persons.
- Observe all standard safety precautions and good practices when working with electrical equipment.
- Keep your work environment clear and well-lit, with bystanders at a safe distance.
- Inspect the product before every use for cracked, corroded or broken parts and any leakages.

 **WARNING! DO NOT** use this product if it is damaged or leaking in any way. Contact Draper Tools for repair and replacement options.

- Use the product only for its intended purpose and as instructed in this manual.
- **DO NOT** attempt to disassemble or modify this product in any way.
- If the heater is not working properly. Switch off and disconnect the heater and move to a well-ventilated area **IMMEDIATELY**. Have the heater checked for correct operation by a qualified engineer before next use.
- If the supply cord is damaged, it must be replaced by Draper Tools or their authorised representative in order to avoid a hazard.
- **NEVER** abuse the power cord:
 - Unwind the power cord fully before connecting it to the power supply.
 - **NEVER** remove the plug from the power supply by pulling on the cord.
 - **DO NOT** move the product using the cord or plug.
 - Keep the power cord away from sources of heat, liquids, sharp edges and moving parts.
 - The power cord attached to this product is not suitable for use on building sites.

4.2 Additional Safety information for this Heater



WARNING! Improper use of this heater may result in serious injury or death from burns, fire, explosions, electrical shock and carbon monoxide poisoning.



WARNING! Only use this heater in well ventilated areas and ensure continuous ventilation is provided.

- This heater is intended for use in commercial/ industrial buildings where adequate ventilation is provided. **DO NOT** use this heater in small habitable areas that are occupied by individuals that are not capable of leaving the room on their own, unless constant supervision is provided.
- **DO NOT** use the heater in dusty environments.
- **DO NOT** expose this product to temperatures greater than 60°C.
- Position the heater on a firm and level surface during use and ensure that it is correctly and safely positioned.
- The heater must **ONLY** be used in its normal operating position.
- **ALWAYS** observe the correct clearances between the heater and surrounding objects:
 - **Outlet:** 2.5m (8ft)
 - **Sides, top and rear:** 1.25m (4ft)
- **DO NOT** position the heater near to curtains or other combustible materials that may move and come into contact with the heater.
- **DO NOT** position this heater in the vicinity of combustible materials, in explosive environments or in the presence of flammable or combustible gases and vapours.
- **DO NOT** position this heater below or pointing towards a power socket or outlet.
- **DO NOT** use the heater if the wheel assembly has been removed.
- Ensure that the power switch is in the “off” (O) position before connecting the heater to the power supply.
- **ALWAYS** check that the heater is positioned safely before turning it on.
- **NEVER** leave the heater unattended while it is on under any circumstances.
- **NEVER** cover any part of the heater as this may cause the heater to overheat or the covering item to ignite or burn.
- **NEVER** insert foreign objects through the heat plate or other openings in the heater body.

- **NEVER** place objects on the engine while it is in use and keep all air vents clear of dust, dirt and other obstructions.



WARNING! Risk of shock!

- **DO NOT** allow the heater to come into contact with water or any other liquid.
- **DO NOT** use this heater in the vicinity of a bath, shower, swimming pool or other bodies of water.
- **DO NOT** touch the heater with wet hands.



WARNING! Some parts of the product become extremely hot during use and may cause burns.

- **DO NOT** touch any metal part of the heater other than the handle or wheels during or immediately after use.
- **DO NOT** touch or otherwise interfere with the fuel tank while the heater is in use or is still hot.
- **ALWAYS** switch off the heater, disconnect it from the power supply and allow it to cool for at least 20 minutes before attempting to move or reposition it.
- Particular attention **MUST** be given when children and vulnerable people are present.

4.3 Electrical Safety

- **ONLY** use this product with a power supply that matches the rated voltage of the heater.
 - **NEVER** use this heater with an extension lead, multi-socket or plug adaptor; it must be plugged directly into the power supply.
 - **NEVER** plug more than one heater into the same power outlet.
 - **NEVER** allow the power cord to come into contact with other heated objects or direct the heater at the power cord or supply.
- Avoid body contact with earthed or grounded surfaces, such as pipes, radiators, ranges and refrigerators.
- **DO NOT** use this heater with a programmer, timer, separate remote-control system or any other device that switches the heater on automatically as it may be covered or positioned incorrectly when activated and pose a fire risk.

4.4 Health and Safety Information for the Use of Diesel and Kerosene Fuel

Important: ALWAYS read and understand the fuel product label before use.

- **ONLY** use clean diesel or kerosene fuel with this heater.



WARNING! DO NOT use fuels such as petrol, benzene, paint thinners or other oil compounds in this heater under any circumstances.

- **NEVER** smoke in the vicinity of the machine, especially during refuelling.
- **NEVER** refuel the heater while it is switched on or is still hot.
- **ALWAYS** wear suitable protective gloves and other clothing during refuelling.
- **NEVER** transport the heater with fuel in the fuel tank; drain and store or dispose of all fuel responsibly before transporting the heater.
- **NEVER** start the engine if you can smell fuel vapour in the air.
 - If fuel vapour is present, wait for it to dissipate or move to a new location.
- The engine and fuel get hot during use.
 - **DO NOT** touch the engine during or immediately after use and allow it to cool before refuelling.
- **NEVER** remove the fuel cap while the engine is running or immediately after use.
 - Take care when opening the fuel cap after use as hot vapour may be released from the opening.
- Store all fuels in a cool, clean and dry environment, away from direct sunlight and out of reach of children.
 - Adhere to all local guidance relating to the correct storage of fuel.



WARNING! Diesel is a carcinogenic substance, and kerosene is known to have health implications if handled improperly. Exercise extreme caution when transporting and storing fuel and during refuelling. Clean up spillages IMMEDIATELY and dispose of fuel responsibly and in accordance with local regulations.



WARNING! Burning diesel emits toxic carbon monoxide: a colourless and odourless gas. Breathing exhaust fumes can cause loss of consciousness, permanent respiratory damage and eventually death. ONLY operate this machine in a well-ventilated environment. NEVER use this heater in living or sleeping areas.

4.5 Service

- Have your heater serviced by a qualified repair person using only identical replacement parts. This will ensure that the safety of the heater is maintained.

4.6 Connection to the Power Supply

This appliance is supplied with an approved plug and cord for your safety.

If the power supply cord is damaged, it must be replaced by Draper Tools, an authorised service agent or similarly qualified personnel in order to avoid a hazard.

The damaged or incomplete plug, when cut from the cord, shall be disabled to prevent connection to a live electrical outlet.

This product is Class I† and is designed for connection to a power supply matching that detailed on the rating label and compatible with the plug fitted.

CAUTION! DO NOT use this product with an extension lead or multi-socket.

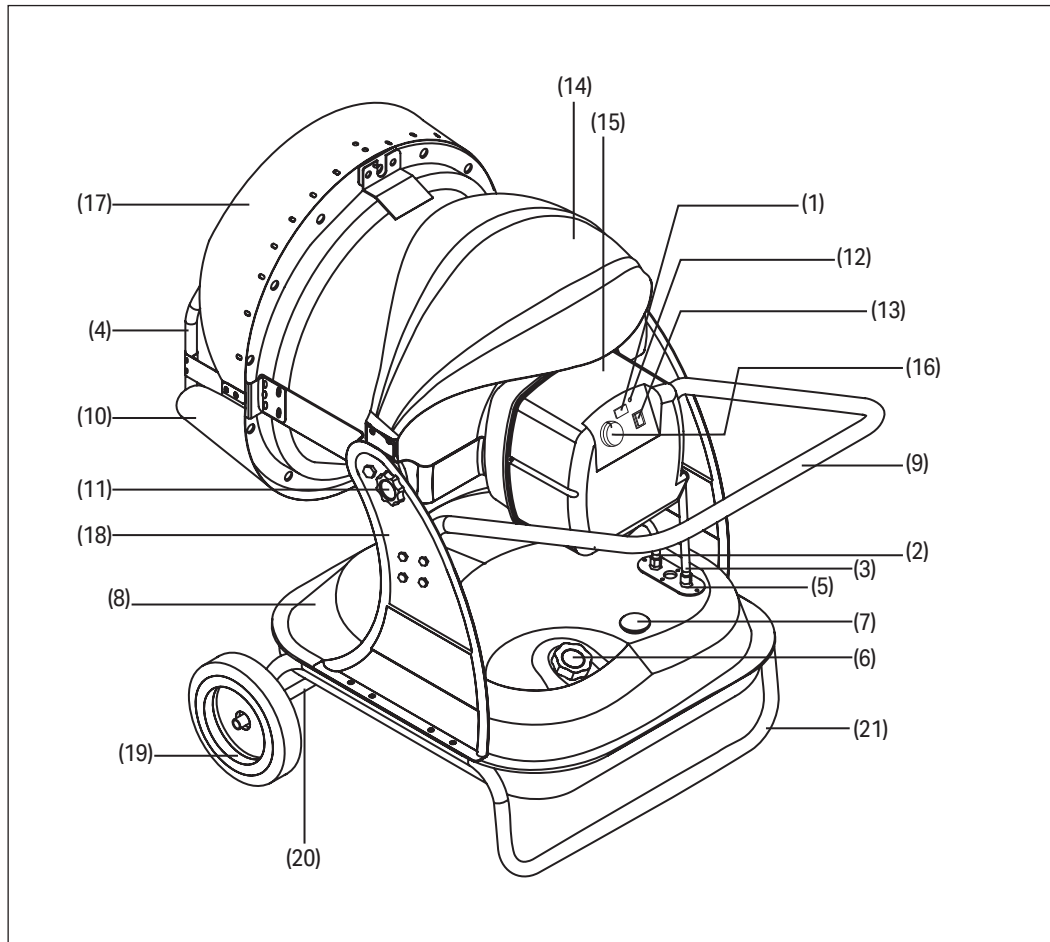
Where a BS-approved three-pin plug is installed, the value of the fuse fitted is marked on the pin face of the plug. Should the fuse need replacing, ensure the substitute is of the correct rating, approved to BS 1363/A and ASTA or BS Kite marked. This should only be performed by suitably qualified personnel.

ASTA 

BSI 

†Earthed: This product requires an earth connection to protect against electric shock from accessible conductive parts in the event of a failure of the basic insulation.

5.1 Product Overview



- | | |
|---------------------------------|-------------------------------|
| (1) Digital display | (12) Power indicator |
| (2) Fuel pipe | (13) Power switch |
| (3) Return pipe | (14) Protective umbrella |
| (4) Front guard | (15) Rear cover |
| (5) Filter access plate | (16) Temperature control dial |
| (6) Fuel cap | (17) Upper reflector |
| (7) Fuel gauge | (18) Vertical supports |
| (8) Fuel tank | (19) Wheel |
| (9) Handle | (20) Wheel axle |
| (10) Lower reflector | (21) Wheel support frame |
| (11) Position adjustment screws | |

5.2 What's in the Box?

Carefully remove the product from the packaging and examine it for any signs of damage that may have occurred during shipment.

- (A) 1 x Upper reflector
- (B) 1 x Lower reflector
- (C) 1 x Umbrella
- (D) 1 x Guard
- (E) 1 x Handle
- (F) 1 x Wheel support frame
- (G) 1 x Axle
- (H) 2 x Wheels

Before assembling the product, lay the contents out and check them against the parts listed below. If any part is damaged or missing, do not attempt to use the product. Please contact the Draper Helpline; contact details can be found at the back of this manual.

- (I) 4 x M6 x 40mm flange bolts
- (J) 4 x M5 x 35mm flange bolts
- (K) 16 x M5 x 10mm flange bolts
- (L) 2 x 17mm washers
- (M) 2 x Pipe washers
- (N) 4 x M6 flange nuts
- (O) 4 x M5 flange nuts
- (P) 2 x Split pins

5.3 Packaging

Keep the product packaging for the duration of the warranty period for reference should the product need to be returned for repair.



WARNING! Keep packaging materials out of reach of children. Dispose of packaging correctly and responsibly and in accordance with local regulations.

Please visit [drapertools.com](https://www.drapertools.com) for our full range of accessories and consumables.

6. Preparing the Heater

6.1 Assembly

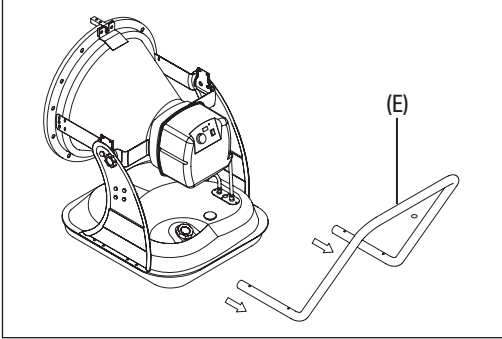


Fig. 1

1. Remove the handle (E) from its shipment position and align it with the open holes on the vertical supports (18) so that it is angled slightly upwards.

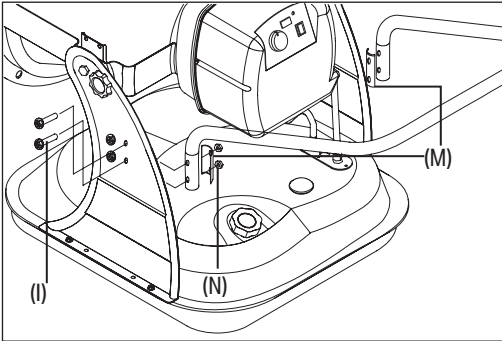


Fig. 2

2. Place a pipe washer (M) around each end of the handle and secure the handle firmly in place using four M6 x 40mm flange bolts (I) and M6 flange nuts (N).

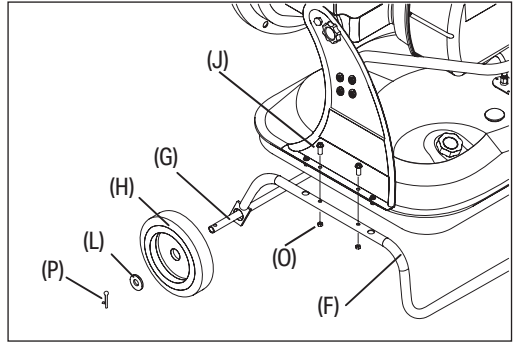


Fig. 3

3. Pass the wheel axle (G) through the holes at the ends of the wheel support frame (F).
4. Slide a wheel (H) and 17mm washer (L) onto each end of the axle and secure them in place using the two split pins (P).
5. Use four M5 x 35mm flange bolts (J) and M5 flange nuts (O) to fix the wheel frame to the base of the vertical supports.

Important: The wheels should be positioned at the front of the heater when attached.

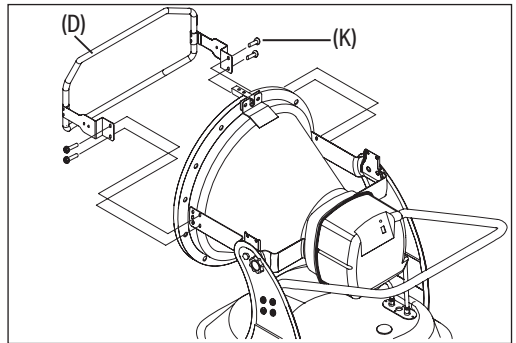


Fig. 4

6. Use four M5 x 10mm flange bolts (K) to attach the guard (D) to the cone body.

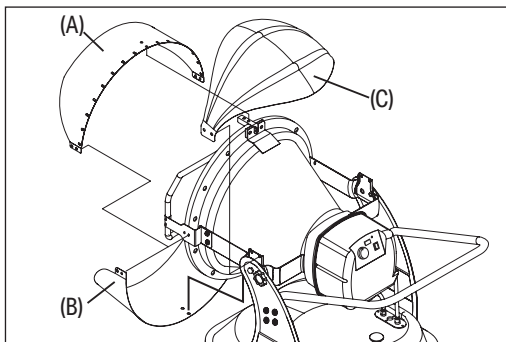


Fig. 5

7. Use four M5 x 10mm flange bolts to attach the reflectors (A) and (B) to the guard bracket.
Important: The upper reflector (A) should be placed against the outside edge of the guard bracket, with the lower reflector (B) placed against the outside edge of the lower reflector.
8. Insert two M5 x 10mm flange bolts through the bottom of the lower reflector to secure it in place.
9. Insert two M5 x 10mm flange bolts through the top of the upper reflector to secure it in place.
10. Use four M5 x 10mm flange bolts to attach the protective umbrella (C) to the openings above the vertical supports.

6.2 Acceptable Fuels

WARNING! This heater is suitable for use **ONLY** with standard diesel or kerosene. **NEVER** use petrol, oil, used oils, naphtha, paint thinners, alcohol or other highly flammable fuels. Use of an incorrect fuel may cause an explosion and serious injury.

Always ensure that the fuel tank is clean both before fuelling and once filled. Foreign matter such as rust, dirt or water may cause the ignition control to shut down the heater and may require regular cleaning of the fuel system.

Always follow local guidance relating to the storage of diesel and kerosene.

WARNING! **NEVER** store diesel or kerosene in a living space. Store it in a well-ventilated area well away from any residential spaces and away from direct sunlight and sources of ignition and heat.

CAUTION! Kerosene deteriorates over time. Do not use old kerosene in this heater.

6.3 Fuelling the Heater

WARNING! **ALWAYS** ensure that the heater is switched off, disconnected from the mains power and has completely cooled before adding fuel. **NEVER** add fuel to the heater while it is running.

Important: **ALWAYS** wear protective gloves during refuelling.

To add fuel to the heater, remove the fuel cap (6) and pour the fuel directly into the fuel tank until the fuel gauge (7) shows 'F', observing the following conditions:

- **ALWAYS** place the heater on a level surface when fuelling.
- **NEVER** overfill the heater and wipe up any spillages **IMMEDIATELY**.
- **NEVER** add fuel to the heater while indoors; fuel the heater **ONLY** in well-ventilated areas.
- **NEVER** use the heater without the fuel filter fitted.

6.4 Positioning the Heater

WARNING! This heater is designed for use **ONLY** in well-ventilated areas. Combustion of the fuels used in this heater produces toxic fumes that are dangerous if inhaled. **NEVER** use this heater to heat residential spaces.

Provide a fresh air opening of at least 0.28m² (3ft²) for every 30,000kCal/h (189,000 BTU). This heater requires 0.292m² (3.15ft²), which can be approximated as:

- A two-car garage door raised 15.25cm (6").
- A single-car garage door raised 22.9cm (9").
- Two 76.2cm (30") windows raised 38.1cm (15").

Position the heater so that it stands upright unaided on a firm, level and fire-resistant surface and is located a safe distance away from flammable objects and wet environments.

Set the angle of the heater by loosening the position adjustment screws (11), tilting the heater as required and then tightening the screws to secure it.

Important: **ALWAYS** ensure that the position adjustment screws are tightly secured before switching on the heater.

6. Preparing the Heater

Ensure that the temperature control dial (16) is set to the lowest position and the power switch (13) is in the 'OFF' position, then connect the plug directly to a power outlet.



WARNING! DO NOT attempt to adjust the angle of the heater during or immediately after use.

ALWAYS switch off the heater, disconnect the power supply and allow it to cool before loosening the position adjustment screws.

Important: Before use, read and understand all the safety instructions listed in this manual.

7.1 Switching On the Heater



WARNING! This heater emits infrared radiation. **ALWAYS ensure that there are no combustible materials in the vicinity of the heater.**

Important: If the heater has recently been switched off, allow at least ten seconds before switching it back on again.

1. Ensure that the fuel tank has been sufficiently filled and the fuel cap has been securely and correctly fitted.
2. Ensure that the power switch is in the 'OFF' position and the temperature control dial is set to the lowest position.
3. Connect the heater to a mains power supply.
4. Move the power switch (13) to the 'ON' position.
5. Turn the temperature control dial (16) to the desired setting; the current temperature is shown on the digital display (1).
Important: If the target temperature is less than the current ambient temperature, the heater will not start.

7.2 Switching Off the Heater

When switching off the heater:

1. Turn the temperature control dial (16) to the lowest setting, then move the power switch (13) to the 'OFF' position.
2. Wait a few minutes for the cooling fan to stop rotating.
3. Disconnect the heater from mains power.



CAUTION! DO NOT unplug the heater until the cooling fan has completely stopped or the combustion chamber may be damaged. After switching off, wait at least ten seconds before restarting the heater.

7.3 Automatic Power Cut-Outs

This heater is equipped with four safety features that will automatically switch off the device under specific circumstances:

Feature	Shutdown conditions
Thermal cut-out	The internal temperature of the heater has reached an unsafe level. Switch off the heater, disconnect it from the mains power and allow it to cool for at least 20 minutes before attempting to restart it.
Short-circuit protection	The circuitry has short-circuited or overloaded and the internal fuse has blown. Have the device checked by a qualified and authorised engineer before reuse.
Flame-out sensor	An internal photocell monitors the condition of the flame in the combustion chamber during normal operation. If the flame is extinguished while the heater is switched on, it will automatically shut down.
Tilt switch	The heater automatically shuts down if the unit is tilted by an angle of 20° or greater in order to protect the ground from heat damage.

If the power cut-outs activate frequently, the heater may need to be serviced. Contact Draper Tools for support.

Important: Read all the Health and Safety information in this manual before attempting to maintain this product. All maintenance should be carried out **ONLY** by authorised and suitably qualified personnel.

 **WARNING! ALWAYS ensure that the heater is switched off, disconnected from the power supply and has fully cooled before attempting any maintenance on this product.**

8.1 General Maintenance and Storage

- Keep the heater clean and dry.
- Clean the heater body and reflectors using a dry cloth **ONLY**.
- Any maintenance to the plug and power cord **MUST** be performed by Draper Tools or its authorised agent.
- The heater should be inspected at least once a year by suitably qualified personnel.
 - Any repairs to the heater must be carried out by suitably qualified personnel.
- Store the heater in a clean and dry location, out of reach of children.

8.2 Draining the Fuel

Important: Read all the Health and Safety guidance for the use of diesel as a fuel before filling or draining this product (Refer to section 4.4).

To drain the fuel from the product, remove the fuel cap and use a siphon to extract the fuel into a suitable container, ensuring that there is no fuel left in the tank.

If dirt or debris is present in the drained fuel or tank, pour a couple of litres of clean fuel into the tank and manoeuvre it around to clean the tank interior. Then drain the fuel again to prevent the filters from clogging.

 **CAUTION! DO NOT use water to clean the inside of the fuel tank.**

Important: Wipe up any spillages **IMMEDIATELY** and dispose of old fuel responsibly and in accordance with local regulations.

8.3 Fuel Tank Care

The fuel tank (8) interior should be cleaned after every 200 hours of use or as necessary. To clean the fuel tank, add a couple of litres of diesel or kerosene and manoeuvre it around the interior of the tank, ensuring that the whole surface is coated, then drain the fuel tank (see **8.2 Draining the Fuel**).

8.4 Filter Care

The filter should be cleaned at least twice a year or as necessary. Rinse the filter in diesel or kerosene and allow it to completely dry before reinstalling it in the heater. The filter can be accessed by removing the filter access plate (5), unscrewing the filter capsule from the nut and removing the filter from within it.

Important: The filter may drip when removed. Clean up any spillages immediately.

Important: In the event that incorrect or contaminated fuel is used in the heater, the filter must be cleaned thoroughly before next use.

8.5 Nozzle/Spark Plug/Photocell Care & Servicing

- The heater should be inspected at least once a year by suitably qualified personnel and the nozzle, spark plug, and photocell should be checked, cleaned and replaced where necessary.
- Contact Draper Tools to discuss servicing options.
- In the event that incorrect or contaminated fuel is used in the heater, it must be replaced immediately.

8.6 Storing the Heater

Important: ALWAYS ensure that the heater is switched off, disconnected from the power supply and has cooled thoroughly before storing it.

- Drain the heater of all fuel before storing it; see **8.2 Draining the Fuel**.
- Store the heater in a clean and dry location, out of reach of children.
- Keep the heater out of direct sunlight and away from combustible materials and sources of ignition when it is stored.

8.7 Troubleshooting

The heater is preprogrammed with a number of error codes that may be shown on the digital display (1).

Error code	Error type	Possible cause	Remedy
E0	Operator error	The power switch is moved to the 'ON' position before the heater is connected to the power supply.	Disconnect the heater from the power supply, move the power switch to the 'OFF' position, then reconnect the heater.
E1	Photocell error	There is no fuel in the fuel tank.	Switch off and disconnect the heater, then refill the fuel tank.
		The fuel is contaminated or dirty.	Drain and refill the fuel tank; see 8.2 .
		The fuel filter is dirty or blocked.	Clean or replace the filter; see 8.4 .
		The photocell is dirty or faulty.	Have the photocell cleaned or replaced. Contact Draper Tools for support.
E2	Temperature control sensor error	The control sensor cable is damaged or disconnected.	Contact Draper Tools for repair and replacement options.
		The temperature control sensor is damaged or faulty.	Contact Draper Tools for repair and replacement options.
		The current ambient temperature is higher than 60°C.	If this temperature assessment is correct, the heater is functioning normally. Otherwise, contact Draper Tools for repair and replacement options.
E3	Thermostat error	The internal temperature of the heater is too high.	Switch off the heater, disconnect it from the power supply and allow it to cool thoroughly before restarting it.
		The anti-tilt sensor has been activated	Switch off the heater, disconnect it from the power supply and allow it to cool. Then place it on a firm and level surface before restarting.
E4	Blower motor error	The blower motor cord is damaged or disconnected.	Contact Draper Tools for repair and replacement options.
		The blower motor fan is obstructed.	Remove the reflectors, umbrella and heat plate and check for any obstructions.
Hi	Temperature conditions	The current ambient temperature is greater than 59°C.	The ambient temperature is outside of the operating temperatures of this heater.
Lo		The current ambient temperature is less than -9°C.	The ambient temperature is outside of the operating temperatures of this heater.
CN		Continuous operation.	The heater is functioning normally.

9. Spares, Returns and Disposal

For spare parts, servicing, and repair and replacement options, please contact the Draper Tools Product Helpline for details of your nearest authorised agent.

Draper Tools will endeavour to hold any spare parts, if applicable, for seven years from the date that it sells the final matching stock item.

Any servicing or repairs carried out by unauthorised personnel or installation of spare parts not supplied by Draper Tools will invalidate your warranty.

Important: For safety, **ALWAYS** drain and clean the product of any oil, fuel, chemicals or other substances before returning it to Draper Tools or its authorised agent. Store these materials in suitable containers and dispose of them in accordance with local regulations. Draper Tools and its agents cannot be responsible for the disposal of these substances.

At the end of its working life, dispose of the product responsibly and in line with local regulations. Recycle where possible.

- **DO NOT** dispose of this product with domestic waste; most local authorities provide appropriate recycling facilities.
- **DO NOT** burn or incinerate the product after use.
- Dispose of diesel and kerosene separately and in accordance with local regulations; **DO NOT** abandon it in the environment.



Draper Tools products are carefully tested and inspected before shipment and are guaranteed to be free from defective materials and workmanship.

Should the tool develop a fault, return the complete tool to your nearest distributor or contact Draper Tools directly. Contact information can be found at the back of this manual.

Proof of purchase must be provided.

If, upon inspection, it is found that the fault occurring is due to defective materials or workmanship, repairs will be carried out free of charge. This warranty period covers parts and labour for 12 months from the date of purchase. Where tools have been hired out, the warranty period covers 90 days from the date of purchase.

This warranty does not apply to any consumable parts, batteries or normal wear and tear, nor does it cover any damage caused by misuse, careless or unsafe handling, alterations, accidents, or repairs attempted or made by any personnel other than the authorised Draper Tools repair agent.

In all cases, to make a claim for faulty workmanship or materials within the standard warranty period, please contact or return the product to the place of purchase. Proof of purchase may be required.

If the place of purchase is no longer trading or if you experience any difficulties with your warranty, please contact Customer Services with the product details and your proof of purchase. Contact details can be found at the back of this manual.

If the tool is not covered by the terms of this warranty, repairs and carriage charges will be quoted and charged accordingly.

This warranty supersedes any other guarantees expressed or implied and variations of its terms are not authorised.

Your Draper Tools guarantee is not effective until you can produce, upon request, a dated receipt or invoice to verify your purchase within the guarantee period.

Please note that this warranty is an additional benefit and does not affect your statutory rights.

Draper Tools Limited

11. Explanation of Symbols



Read the instruction manual



Warning!



Danger of electric shock



Rated voltage



Rated input



Do not cover



Do not incinerate or throw onto fire



Do not abandon in the environment



Product weight



Class I appliance



WEEE -

Waste Electrical & Electronic Equipment
Do not dispose of this product with domestic waste



UK Conformity Assessed



European Conformity

Contact Details

Draper Tools

Draper Tools Limited
Hursley Road
Chandler's Ford
Eastleigh
Hampshire
SO53 1YF
UK

Website: drapertools.com

Email: sales@drapertools.com

Product Helpline: +44 (0) 23 8049 4344

Telephone Sales Desk: +44 (0) 23 8049 4333

General Enquiries: +44 (0) 23 8026 6355

General Fax: +44 (0) 23 8026 0784

Delta International

Delta International BV
Oude Graaf 8
6002 NL
Weert
Netherlands

Please contact the Draper Tools Product Helpline for repair and servicing enquiries.