

**EN**

Original Instructions  
Version 2  
February 2024

**DRAPER**<sup>®</sup>

# HOSE REEL **CART**

**25060**



# 1. Product Introduction

## 1.1 Intended Use

This hose reel cart has a steel frame and tough plastic snap together parts. The deep reel helps to keep the hose tidy and prevents kinking when winding.

**WARNING! This product is not a toy and must be respected.**

Read this manual in full before attempting to assemble, operate or maintain the product and retain it for later use.

## 1.2 Specification

Stock No.	25060
Part No.	GWHC
Hose capacity	1/2" (13mm) x 45M

## 2. Assembly



Fig. 1

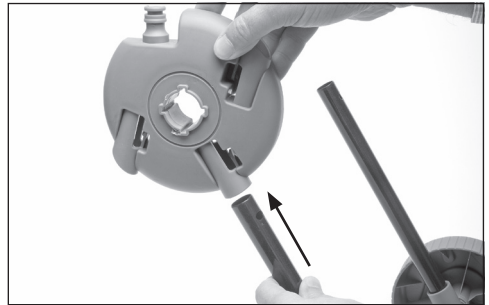


Fig. 4

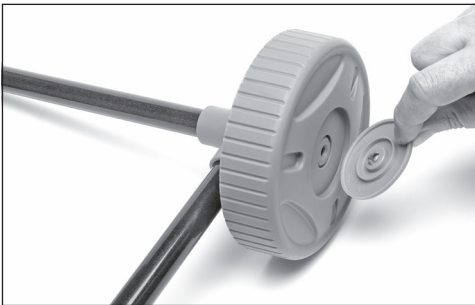


Fig. 2

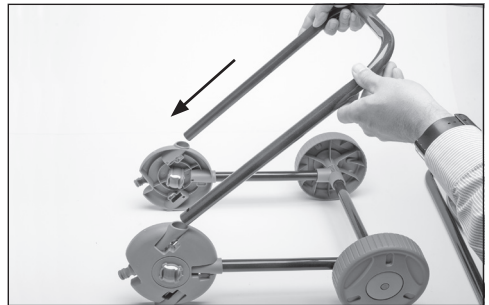


Fig. 5



Fig. 3



Fig. 6

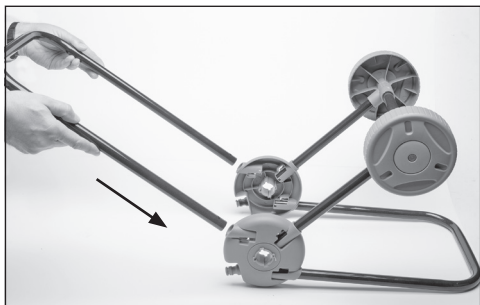


Fig. 7



Fig. 11

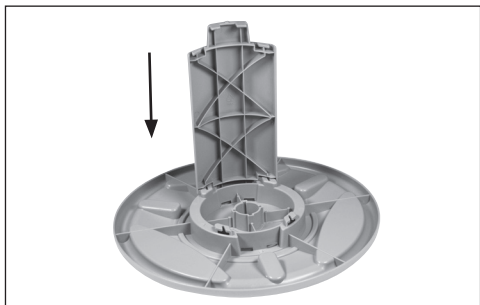


Fig. 8

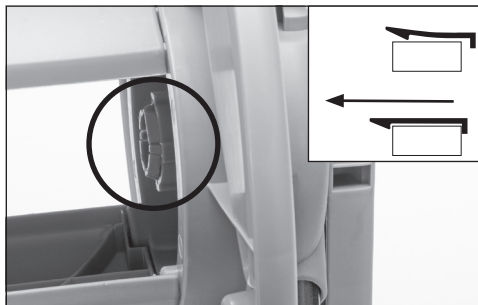


Fig. 12

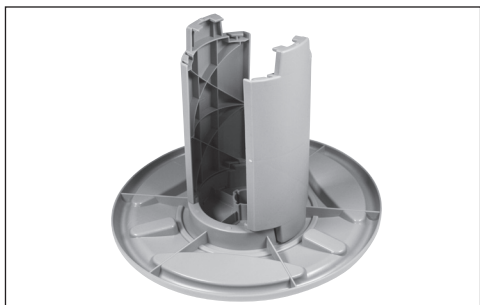


Fig. 9

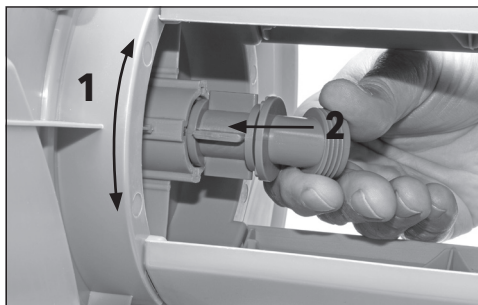


Fig. 13



Fig. 10

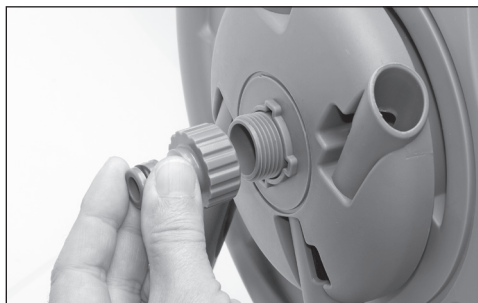


Fig. 14

## Contact Details

### **Draper Tools**

Draper Tools Limited  
Hursley Road  
Chandler's Ford  
Eastleigh  
Hampshire  
SO53 1YF  
UK

**Website:** [drapertools.com](http://drapertools.com)

**Email:** [sales@drapertools.com](mailto:sales@drapertools.com)

**Product Helpline:** +44 (0) 23 8049 4344

**Telephone Sales Desk:** +44 (0) 23 8049 4333

**General Enquiries:** +44 (0) 23 8026 6355

**General Fax:** +44 (0) 23 8026 0784

### **Delta International**

Delta International BV  
Oude Graaf 8  
6002 NL  
Weert  
Netherlands

Please contact the Draper Tools Product Helpline for repair and servicing enquiries.