



DRAPER[®]
Expert

50 TONNE **FLOOR PRESS**

35582



These instructions accompanying the product are the original instructions. This document is part of the product, keep it for the life of the product passing it on to any subsequent holder of the product. Read all these instructions before assembling, operating or maintaining this product.

This manual has been compiled by Draper Tools describing the purpose for which the product has been designed, and contains all the necessary information to ensure its correct and safe use. By following all the general safety instructions contained in this manual, it will ensure both product and operator safety, together with longer life of the product itself.

All photographs and drawings in this manual are supplied by Draper Tools to help illustrate the operation of the product.

Whilst every effort has been made to ensure the accuracy of information contained in this manual, the Draper Tools policy of continuous improvement determines the right to make modifications without prior warning.

1. TITLE PAGE

1.1 INTRODUCTION:

USER MANUAL FOR: 50 Tonne Floor Press

Stock No: 35582

Part No: PFP/50

1.2 REVISIONS:

Date first published November 2018.

First revision June 2022.

As our user manuals are continually updated, users should make sure that they use the very latest version.

Downloads are available from: <http://drapertools.com/manuals>

Draper Tools Limited
Hursley Road
Chandler's Ford
Eastleigh
Hampshire
SO53 1YF
UK

Draper Tools Limited
Oude Graaf 8
6002 NL
WEERT
Netherlands

Website: drapertools.com

Product Helpline: +44 (0) 23 8049 4344

General Fax: +44 (0) 23 8026 0784

1.3 UNDERSTANDING THIS MANUALS SAFETY CONTENT:

WARNING! – Information that draws attention to the risk of injury or death.

CAUTION! – Information that draws attention to the risk of damage to the product or surroundings.

1.4 COPYRIGHT © NOTICE:

Copyright © Draper Tools Limited.

Permission is granted to reproduce this publication for personal and educational use only. Commercial copying, redistribution, hiring or lending is prohibited.

No part of this publication may be stored in a retrieval system or transmitted in any other form or means without written permission from Draper Tools Limited.

In all cases this copyright notice must remain intact.

2. CONTENTS

1. TITLE PAGE	
1.1 INTRODUCTION.....	2
1.2 REVISION HISTORY	2
1.3 UNDERSTANDING THIS MANUAL	2
1.4 COPYRIGHT NOTICE	2
2. CONTENTS	
2.1 CONTENTS	3
3. WARRANTY	
3.1 WARRANTY.....	4
4. INTRODUCTION	
4.1 SCOPE.....	5
4.2 SPECIFICATION	5
5. HEALTH AND SAFETY INFORMATION	
5.1 HEALTH AND SAFETY.....	6
6. TECHNICAL DESCRIPTION	
6.1 IDENTIFICATION	7
7. UNPACKING AND CHECKING	
7.1 PACKAGING	8
7.2 WHATS IN THE BOX	8
8. ASSEMBLY	
8.1 ASSEMBLY.....	9
9. INSTRUCTIONS FOR USE	
9.1 GENERAL USE.....	14
9.2 OPERATION	14
9.3 PRESS PIN SETS OPERATION.....	14
9.4 V-BLOCK OPERATION.....	15
9.5 MOVABLE CYLINDER OPERATION	16
9.6 WORKING TABLE OPERATION.....	17
10. MAINTENANCE	
10.1 MAINTENANCE	18
11. DISPOSAL	
11.1 DISPOSAL.....	19
12. EXPLANATION OF SYMBOLS	
12.1 EXPLANATION OF SYMBOLS	19
DECLARATION OF CONFORMITY	ENCLOSED

3. WARRANTY

3.1 WARRANTY

Draper tools have been carefully tested and inspected before shipment and are guaranteed to be free from defective materials and workmanship.

Should the tool develop a fault, please return the complete tool to your nearest distributor or contact:

Draper Tools Limited, Chandler's Ford, Eastleigh, Hampshire, SO53 1YF. England.

Telephone Sales Desk: (023) 8049 4333 or:

Product Helpline (023) 8049 4344.

A proof of purchase must be provided.

If upon inspection it is found that the fault occurring is due to defective materials or workmanship, repairs will be carried out free of charge. This warranty period covering labour is 12 months from the date of purchase except where tools are hired out when the warranty period is 90 days from the date of purchase. This warranty does not apply to any consumable parts, any type of battery or normal wear and tear, nor does it cover any damage caused by misuse, careless or unsafe handling, alterations, accidents, or repairs attempted or made by any personnel other than the authorised Draper warranty repair agent.

Note: If the tool is found not to be within the terms of warranty, repairs and carriage charges will be quoted and made accordingly.

This warranty applies in lieu of any other warranty expressed or implied and variations of its terms are not authorised.

Your Draper warranty is not effective unless you can produce upon request a dated receipt or invoice to verify your proof of purchase within the warranty period.

Please note that this warranty is an additional benefit and does not affect your statutory rights.

Draper Tools Limited.

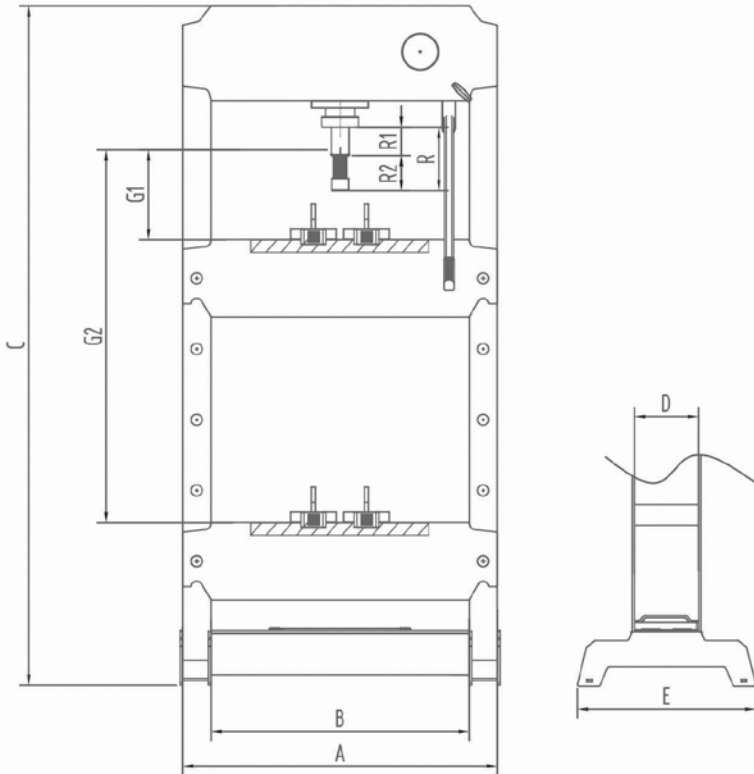
4. INTRODUCTION

4.1 SCOPE

This product is intended for trade use and has the quality and features to meet and exceed the expectations of the most demanding user. It is designed to apply controlled force to press together and push apart components for assembly and dismantling procedures. Any application other than that it was intended for, is considered misuse.

4.2 SPECIFICATION

A	Overall width	930mm
B	Throat width	750mm
C	Overall height	1,900mm
D	Frame width	200mm
E	Maximum depth	535mm
G1	Table to ram minimum	80mm
G2	Table to ram maximum	780mm
R	Ram depth	220mm
R1	Ram stroke	145mm
R2	Ram screw travel	75mm
	Working air pressure	9-12bar
	Max. pressure	50 tonnes



5. HEALTH AND SAFETY INFORMATION

5.1 HEALTH AND SAFETY INFORMATION

This press has been designed for general direct pressure and bearing extraction work etc. Never use it for applications that should not be performed by a press. Always use the appropriate tool for each specific task. Handle the press correctly and ensure that all parts and components are in good condition and that no parts are missing prior to its use.

The press should only be used by authorised persons, having read carefully and understood the contents of this manual. Keep non-authorised persons, particularly children, away from the working area.

Always position the press with the rear against a wall, allowing suitable clearance for the components to be mounted on the press table. If the press is situated in the open workshop, it is essential that a guard be placed at the rear of the unit. The press feet need to be fastened securely to the ground!

The operator must wear personal protective equipment including eye protection, clothes, gloves, safety helmet, shoes, and ear protection during operation. To avoid accidents, always be aware of any on-going work on the machine. Also, always stay focused on the job to be done.

Do not modify the press in any way. Safety valve should not be tampered with under any circumstances.

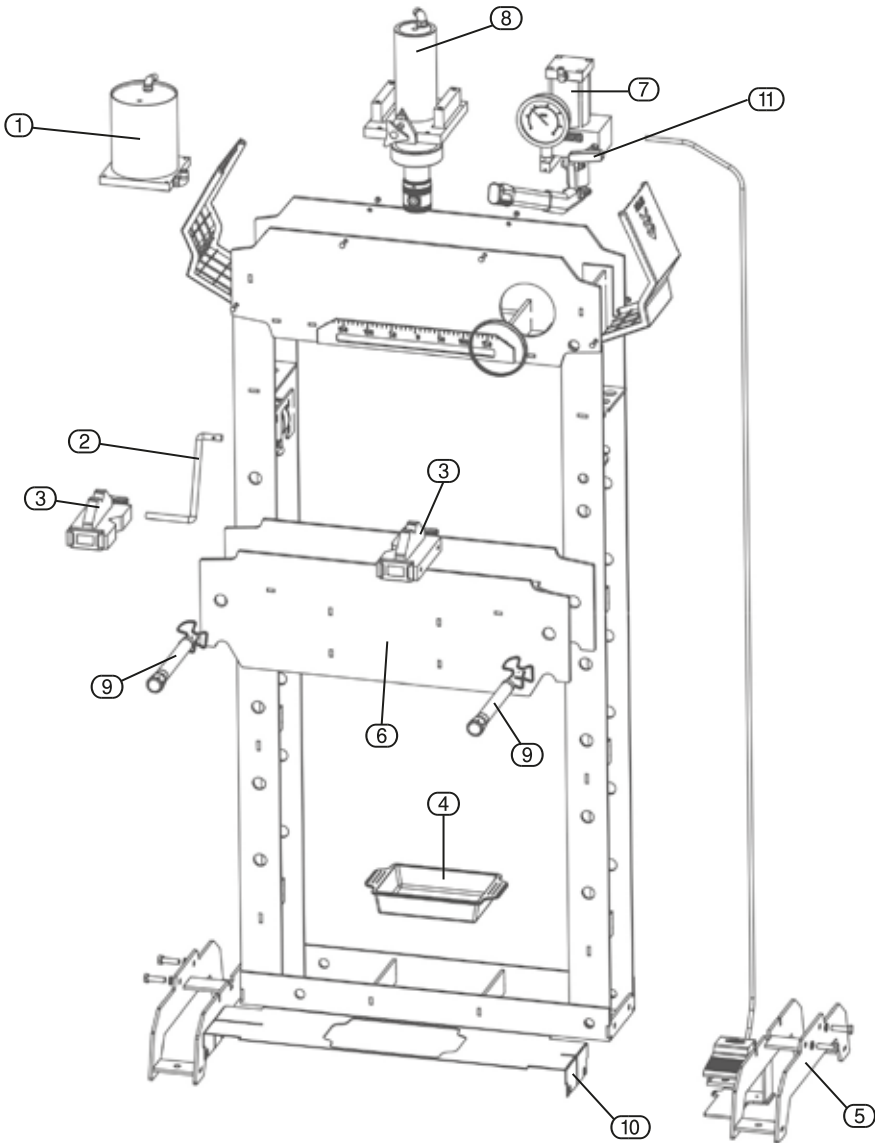
Never exceed the rated capacity of the press and V-blocks.

Non-compliance with these instructions may result in severe injury to the user, or damage to the press and the work piece being manipulated.

The manufacturer accepts no responsibility for the improper use of the press or the component handled.

6. TECHNICAL DESCRIPTION

6.1 IDENTIFICATION



- ① Oil tank.
- ② Winch handle.
- ③ V-blocks.
- ④ Parts tray.
- ⑤ Press foot with foot pedal.
- ⑥ Work table.

- ⑦ Pump unit.
- ⑧ Ram cylinder.
- ⑨ Table pins.
- ⑩ Cover plate.
- ⑪ Release valve.

7. UNPACKING AND CHECKING

7.1 PACKAGING

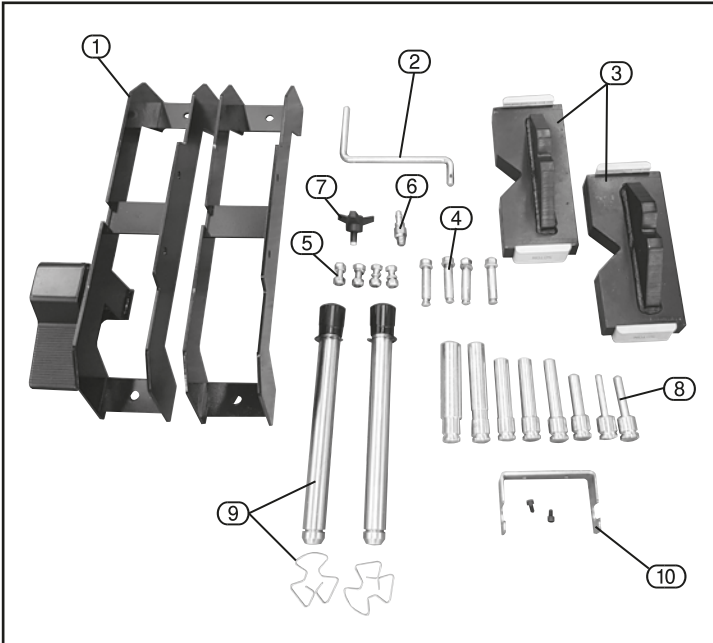
Carefully remove packaging from the press and examine it for any sign of damage that may have happened during shipping. Open the inner cardboard box, lay the contents out and check them against the parts shown below. If any part is damaged or missing; please contact the Draper Helpline (the telephone number appears on the Title page) and do not attempt to use the press. The packaging material should be retained at least during the guarantee period: in case the machine needs to be returned for repair.

Warning! Some of the packaging materials used may be harmful to children. Do not leave any of these materials in the reach of children.

If any of the packaging is to be thrown away, make sure they are disposed of correctly; according to local regulations.

7.2 WHAT'S IN THE BOX?

As well as the press; there are several parts not fitted or attached to it.



- ① Feet
- ② Winch handle
- ③ V-blocks
- ④ Floor bolts
- ⑤ Foot bolts
- ⑥ Air line connector
- ⑦ Slider lock knob
- ⑧ Press pins
- ⑨ Table pins + safety clips
- ⑩ Pump handle support

8. ASSEMBLY

Open the crate and remove all 4 sides of the the crate .

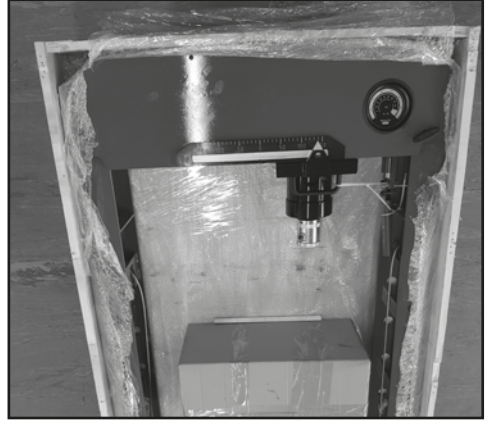


FIG.1

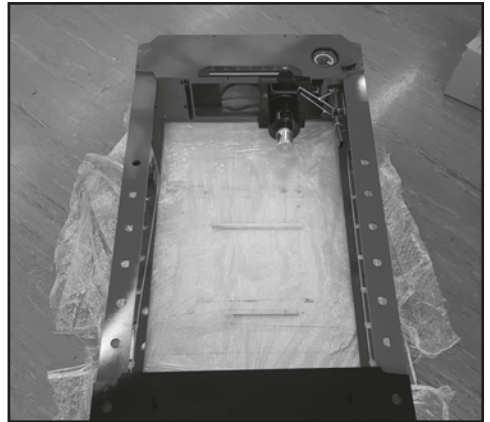


FIG.2

Remove the inner cardboard parts box and inspect the contents .

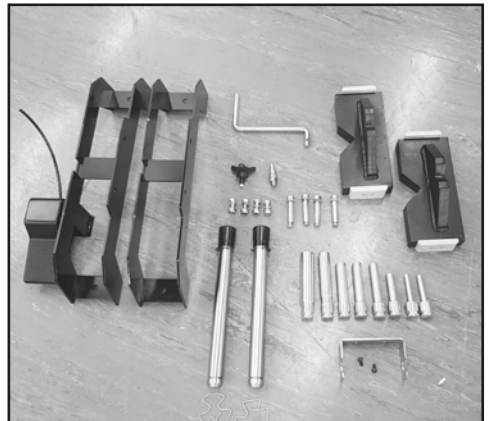


FIG.3

8. ASSEMBLY

Install the feet with the bolts supplied.

NOTE: The press will require lifting and moving to allow the feet to be fitted, ensure you have the correct lifting equipment.

Ensure the foot with the foot pedal is fitted to the right hand side of the press.



FIG.4



FIG.5

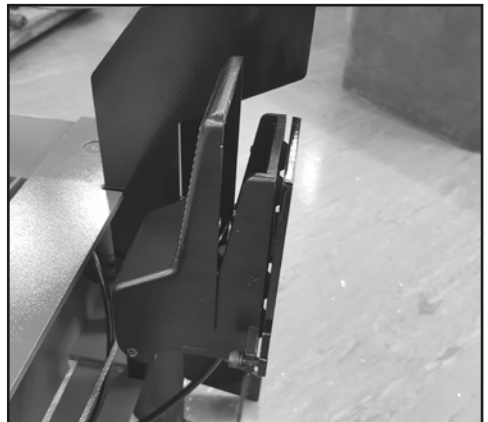


FIG.6

Attach the air pipe (A) from the pump to the foot pedal and screw in the air line coupling (B) using an appropriate thread sealing compound to ensure it is air tight.

CAUTION: HEAVY!

Using correct lifting equipment, lift the press from the top (ensure no moving parts, cables or pipes are trapped) and slowly bring the press to its feet.

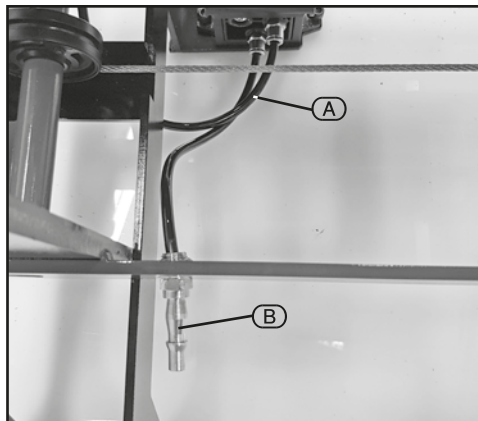


FIG.7

Install the pump handle by removing and reinstalling the bolt supplied

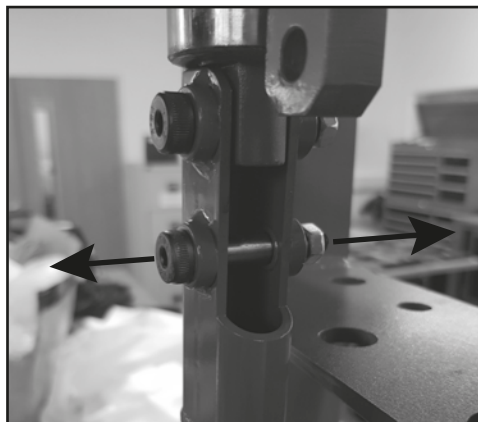


FIG.8

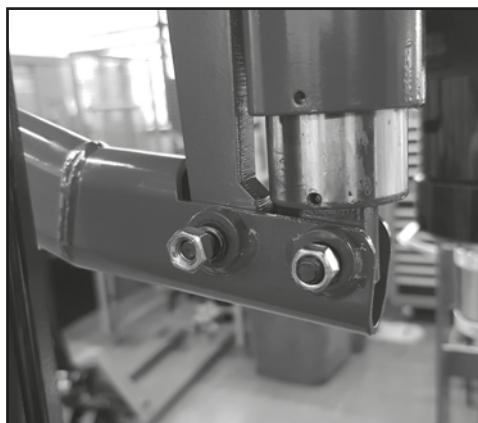


FIG.9

8. ASSEMBLY

Fit the winch handle and adjust the work table to a suitable height and fit the table pins making sure they are **all** the way through both the front and back frame holes and are secured with the spring clips supplied.



FIG.10

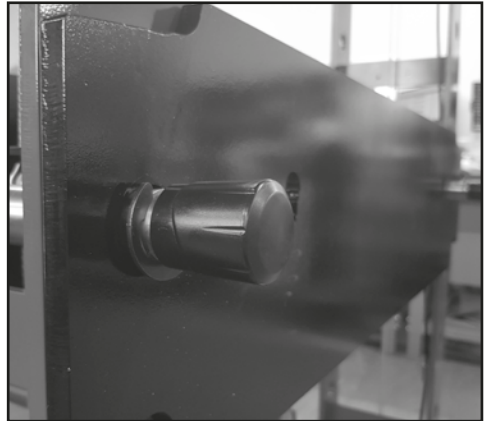


FIG.11

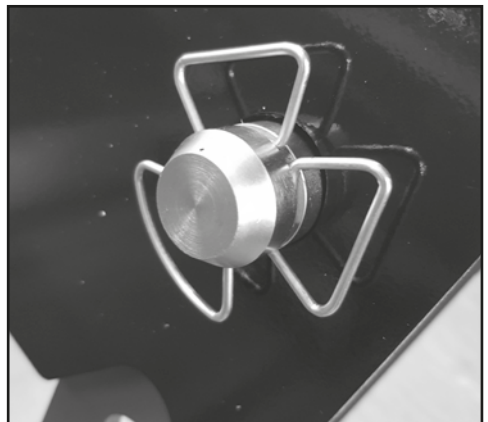


FIG.12

8. ASSEMBLY

Fit the Ram cylinder slider knob and all other accessories.

Finally attach to a suitable air supply.

Your press is now ready to use.

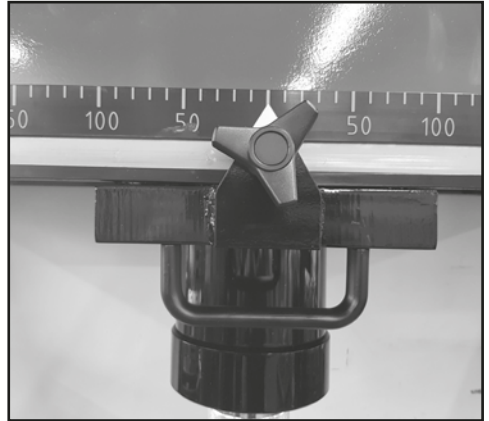


FIG.13

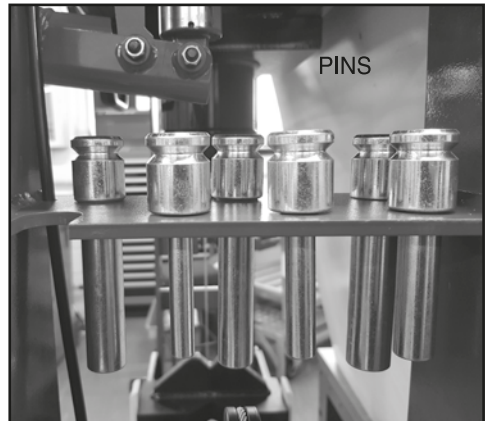


FIG.14

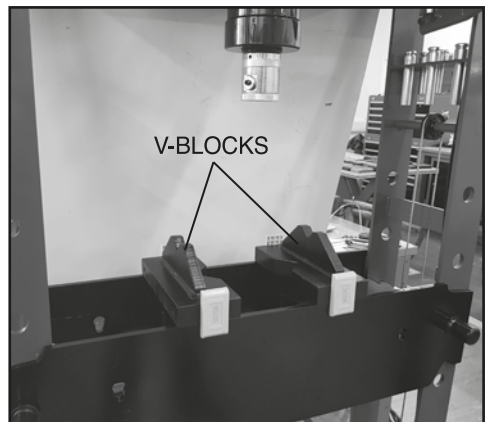


FIG.15

9. INSTRUCTIONS FOR USE

9.1 GENERAL USE

Make sure all the parts are fixed and tightened and the press should be placed on a firm, regular and horizontal surface and the press feet **MUST** be securely bolted to the floor.



WARNING: DO NOT use the press unless it is correctly bolted to the floor, otherwise it will topple. Danger of death or serious injury.

Ensure table is at the required working height. Ensure the table is fully supported on the table pins.

WARNING: DO NOT use the press without the table secured with the table pins. Leave enough space around the press while it is in operation so that it is always accessible. The V-blocks must always be used in pairs. Only an authorised person having read carefully and understood the contents of this manual is allowed to operate the press. Only for pneumatic pump: working air pressure 9-12bar.

9.2 OPERATION

Close the release valve by turning it clockwise until it is firmly closed. Activate the pump (by hand or foot pedal) until the piston approaches the workpiece. Align the workpiece and the piston so that the workpiece is properly centered and correctly supported by the v-blocks and table. Activate the pump to apply pressure to the piece. When the work is finished, stop the pump and open the release valve to remove the piece.

WARNING: Always ensure the workpiece is secure in the press during operation, as under pressure, components may move and be suddenly ejected at high speed and force. Always wear the correct PPE when using the press.

9.3 PRESS PIN SETS OPERATION (FIG.16)

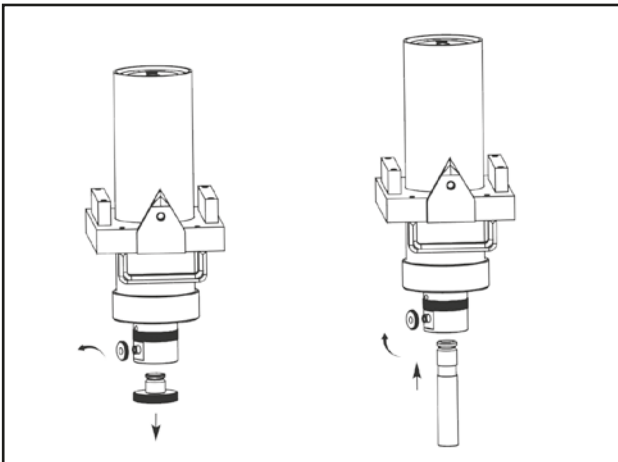
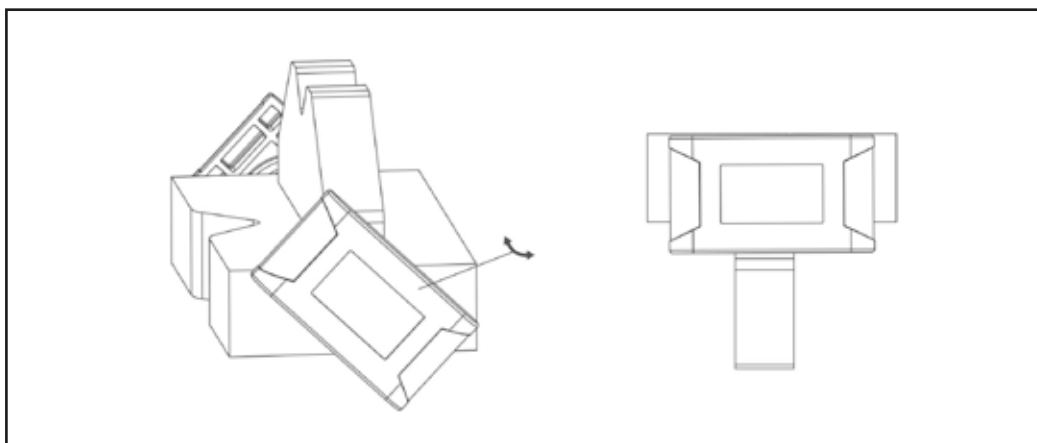
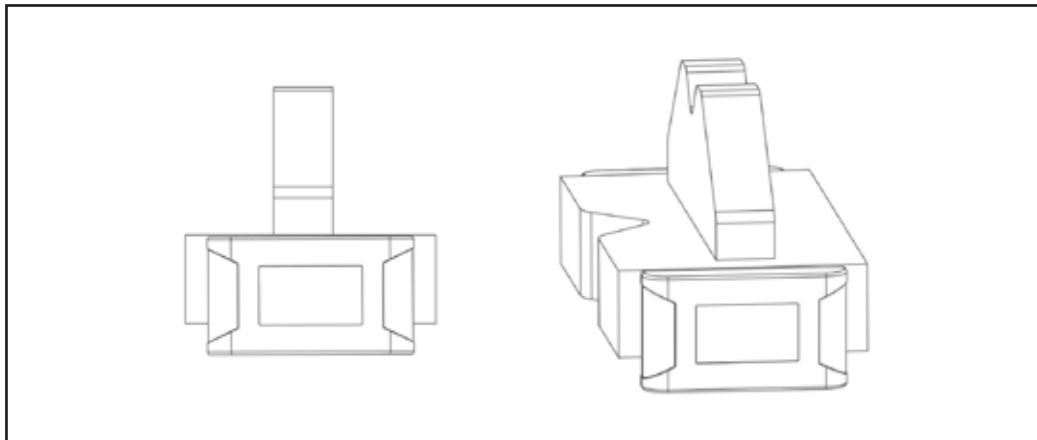


FIG.16

NOTE: Always be aware of the rated load of each pin (this is stamped on each pin).
WARNING: DO NOT exceed the maximum load stamped into each press pin.

9. INSTRUCTIONS FOR USE

9.4 V-BLOCK OPERATION



9. INSTRUCTIONS FOR USE

9.5 MOVABLE CYLINDER OPERATION

Turn the ram cylinder slider knob anti-clockwise, adjust the ram and tighten the knob by turning clockwise.

WARNING: Ensure the ram exerts pressure perpendicular to the work table. Do not exert offset pressure on the workpiece.

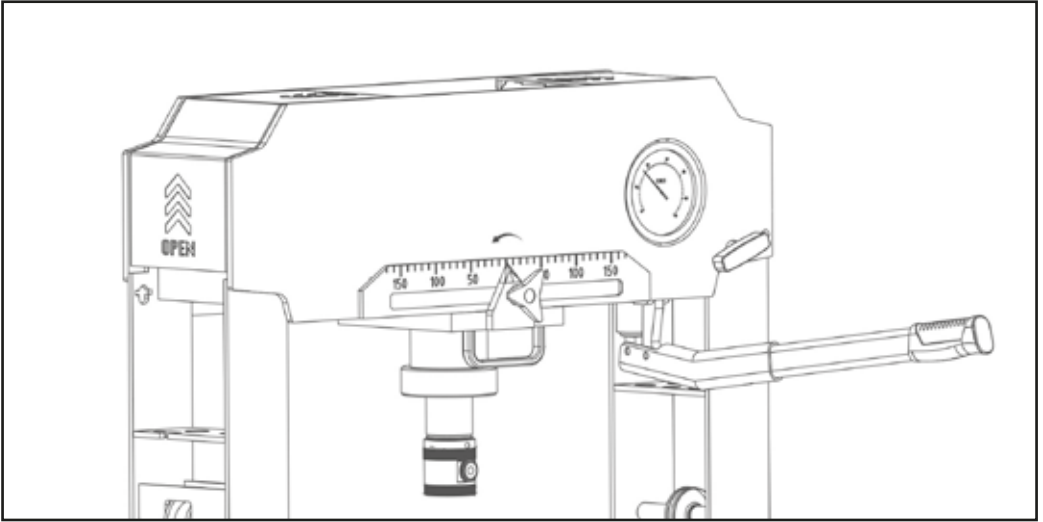


FIG.19

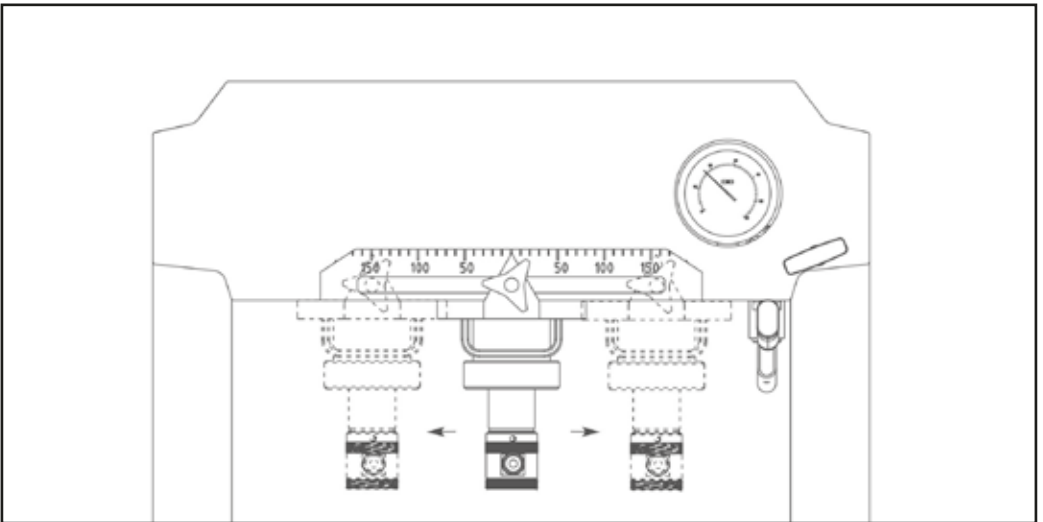
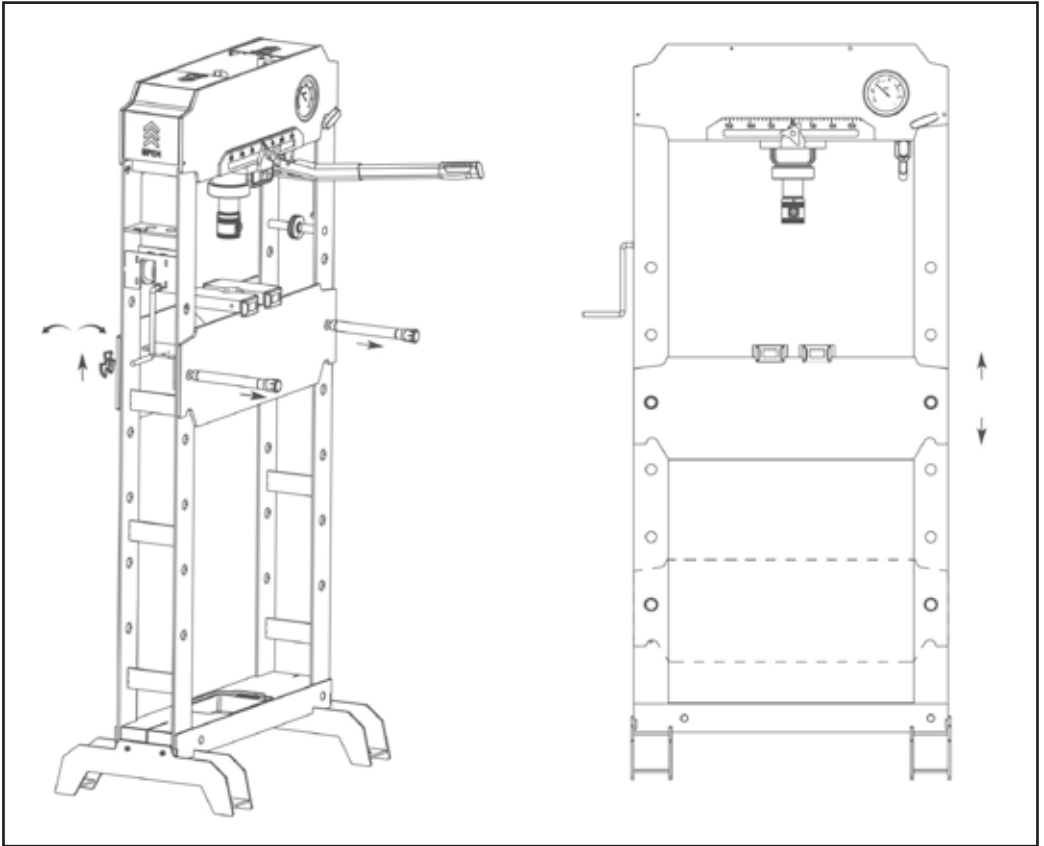


FIG.20

9. INSTRUCTIONS FOR USE

9.6 WORKING TABLE OPERATION



Remove the table pins, adjust the table with winch handle to the required height and re-insert pins.

NOTE: Ensure that the spring clips are installed and that the table is FULLY supported by the table pins. DO NOT hold the table weight on the winch cable mechanism only.

Lift table slightly to release support pins.

10. MAINTENANCE

10.1 MAINTENANCE

CAUTION: Do not use damaged/deformed product. If abnormal noise or vibration occurs, stop use immediately, then inspect and ask manufacturer for help. It is recommended that this inspection be made by a manufacturer's authorized repair facility.

Keep the press clean and well lubricated to prevent foreign matter from entering the system.

Store the press, with pistons completely retracted, in a well-protected area where it will not be exposed to corrosive vapors, abrasive dust, or any other harmful elements.

Periodically inspect the condition of the product and maintain as appropriate.

Owners and/or operators should be aware that repair of this equipment may require specialized knowledge and facilities. It is recommended that an annual inspection of the product be made by a manufacturer's or supplier's authorized repair facility and that any defective parts, decals, or safety labels or signs be replaced with manufacturer's or supplier's specified parts.

Any product that appears to be damaged in any way, is found to be worn, or operates abnormally **SHALL BE REMOVED FROM SERVICE UNTIL REPAIRED**. It is recommended that necessary repairs be made by a manufacturer's or supplier's authorized repair facility if repairs are permitted by the manufacturer or supplier.

Only attachments and/or adapters supplied by the manufacturer shall be used.

Lubricate the moving parts at regular intervals.

The elements of the press should be kept clean and protected from aggressive conditions at all times.

Always use original spare parts.

11. DISPOSAL

11.1 DISPOSAL

At the end of the machine's working life, or when it can no longer be repaired, ensure that it is disposed of according to national regulations.

Contact your local authority for details of collection schemes in your area.

In all circumstances:

- Do not dispose of power tools with domestic waste.
- Do not incinerate.
- Do not abandon in the environment.
- Do not dispose of WEEE* as unsorted municipal waste.

* Waste Electrical & Electronic Equipment.



12. EXPLANATION OF SYMBOLS

12.1 EXPLANATION OF SYMBOLS



Warning! Read the instruction manual.



Conforms to all relevant safety standards.



UK Conformity Assessed.

CONTACTS

Draper Tools Limited

UK: Hursley Road, Chandler's Ford, Eastleigh,
Hampshire. SO53 1YF. U.K.

EU: Oude Graaf 8
6002 NL Weert (NL).

Helpline: (023) 8049 4344

Sales Desk: (023) 8049 4333

Internet: drapertools.com

E-mail: sales@drapertools.com

General Enquiries: (023) 8026 6355

Service/Warranty Repair Agent:

For aftersales servicing or warranty repairs, please contact the Draper Tools Helpline for details of an agent in your local area.

YOUR DRAPER STOCKIST

DBTL0622

©Published by Draper Tools Limited.

No part of this publication may be reproduced, stored in a retrieval system or transmitted in any form or by any means, electronic, mechanical photocopying, recording or otherwise without prior permission in writing from Draper Tools Ltd.