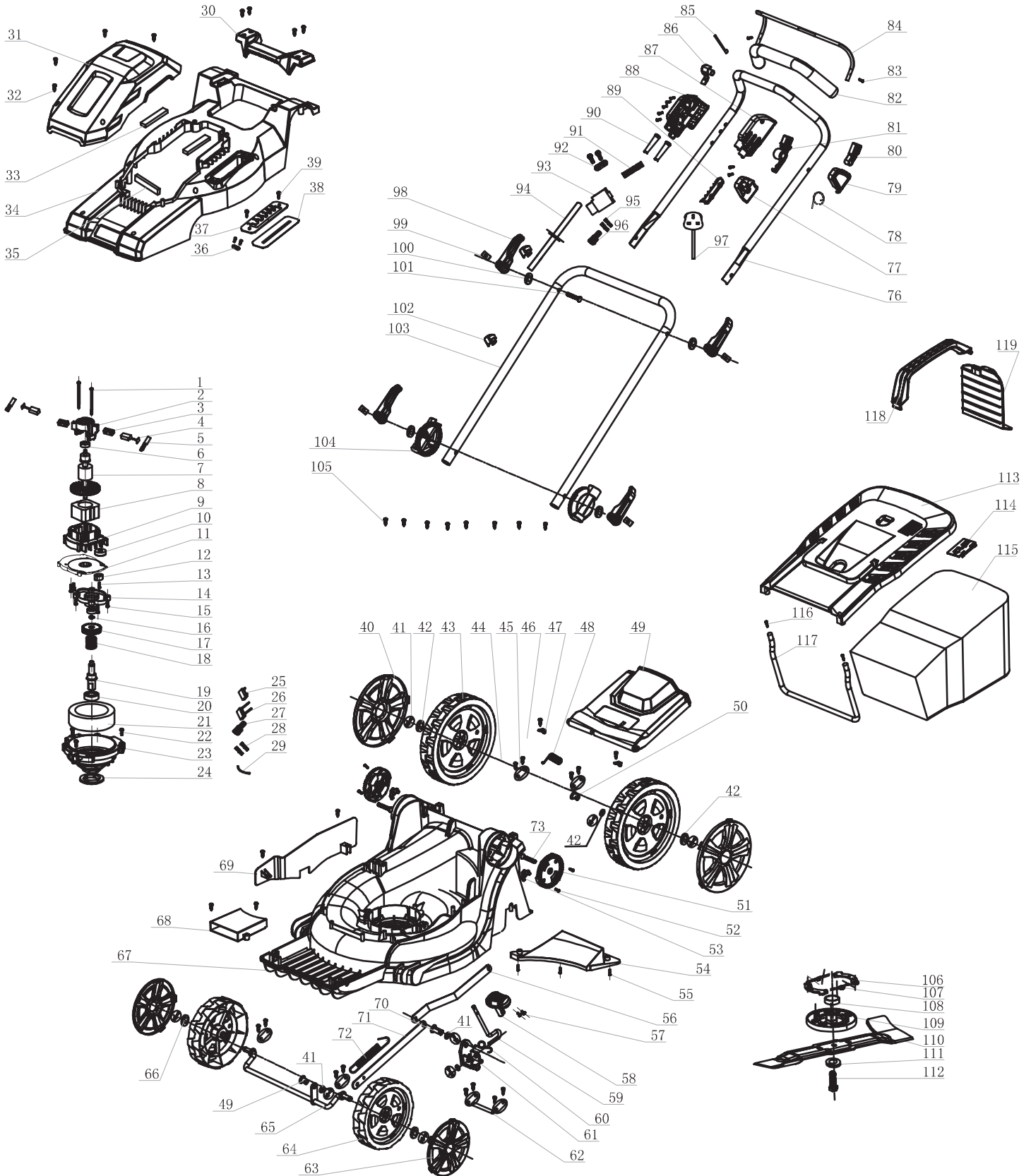


230V LAWN MOWER

20535 – GLM1600/400 SPARE PARTS LISTING





230V LAWN MOWER

20535 – GLM1600/400 SPARE PARTS LISTING

KEY No.	PART No.	STOCK No.	DESCRIPTION
MOTOR ASSEMBLY			
1			(NP) Screw (ST4.2*72)
2	YGLM1600/400-04	70489	Carbon brush assembly (Pair)
3			
4			
5			
6			(NP) Illustration terminal
7			(NP) Bearing (608ZZ)
8			(NP) Rotor (230V 1800W)
9			(NP) Stator (230V 1800W)
10			(NP) Air deflector
11			(NP) Bearing (6201ZZ)
12			(NP) Motor holder
13			(NP) Wool felt
14			(NP) Screw (S4*16)
15			(NP) Tooth box cover plate
16			(NP) Screw (ST4*16)
17			(NP) Jump ring (ø12)
18			(NP) Big gear wheel
19			(NP) Torsional spring
20			(NP) Output shaft
21			(NP) Bearing (6003ZZ)
22			(NP) Sponge
23			(NP) Screw (ST5*20)
24			(NP) Gear box base
25			(NP) Friction plate
26			(NP) Overload protector (7A)
27			(NP) Capacitor
28			(NP) Female terminal
29			(NP) Male terminal
30			(NP) Connecting line
MACHINE ASSEMBLY – UPPER HOUSING ASSEMBLY			
30			(NP) Handle
31			(NP) Upper cover
32			(NP) Screw (ST4*16)
33			(NP) Air inlet sponge
34			(NP) Upper housing
35			(NP) Air inlet sponge
36			(NP) Pressing plate
37			(NP) Scale panel
38			(NP) Gasket
39			(NP) Screw (ST4*12)

KEY No.	PART No.	STOCK No.	DESCRIPTION
CHASSIS COMPONENTS			
40	YGLM1600/400-45	70516	Rear Wheel Assembly
41			
42			
43			
44			(NP) Rear axle shaft
45			(NP) Axle shaft pressing plate
46			(NP) Bolt
47			(NP) Pressing plate
48			(NP) Spring
49			(NP) Rear cover
50			(NP) Connecting rod button – 2
51			(NP) Adjustment block – inside
52			(NP) Screw (ST5*20)
53			(NP) Hand rest nut
54			(NP) Baseboard
55			(NP) Screw (ST4*16)
56			(NP) Back link
57			(NP) Screw (M5X8)
58			(NP) Height adjusting handle
59			(NP) Regulating stem
60			(NP) Adjust knob spring
61			(NP) Adjust lever block
62			(NP) Adjust rod shaft
41	YGLM1600/400-66	70611	Front Wheel Assembly
63			
64			
66			
65			(NP) Front axle shaft
67			(NP) Chassis
68			(NP) Ventilation set
69			(NP) Flap
70			(NP) Connecting rod button – 1
71			(NP) Front connecting rod
72			(NP) Tension spring
73			(NP) Bolt (M8*60)
76			(NP) Upper frame
77			(NP) Tie rod fixed seat – 1
78			(NP) Reed switch knob
79			(NP) Tie rod fixed seat – 2
80			(NP) Switch board seat – 2



230V LAWN MOWER

20535 – GLM1600/400 SPARE PARTS LISTING

KEY No.	PART No.	STOCK No.	DESCRIPTION
81			(NP) Switch board seat – 2
82			(NP) Sponge
83			(NP) Screw (ST4*16)
84			(NP) Switch lever
85			(NP) Switch spring
86			(NP) Switch unlock button
87			(NP) Switch box left cover
88			(NP) Switch box right cover
89			(NP) Switch box fixing plate
90			(NP) Cable sheath
91			(NP) Unlock button spring
92			(NP) Cable clamp
93			(NP) Switch
94			(NP) Cable
95			(NP) Female terminal
96			(NP) Double hole male terminal sleeve
97			(NP) Power line

PART PACKED PUSH ROD ASSEMBLY

98			
99			
100	YGLM1600/400-96	70734	Upper wrench handle assembly
101			
102			(NP) Wire buckle
103			(NP) Lower frame
98			
99			
100	YGLM1600/400104	70796	Lower wrench handle assembly
101			
104			
105			(NP) Tapping screw (ST4*16)

KEY No.	PART No.	STOCK No.	DESCRIPTION
BLADE ASSEMBLY			
106	YGLM1600/400-110	70887	Blade assembly
107			
108			
109			
110			
111			
112			
GRASS BOX COMPONENT			
113	YGLM1600/400-117	70919	Grass box assembly
114			
115			
116			
117			
118			
119			