

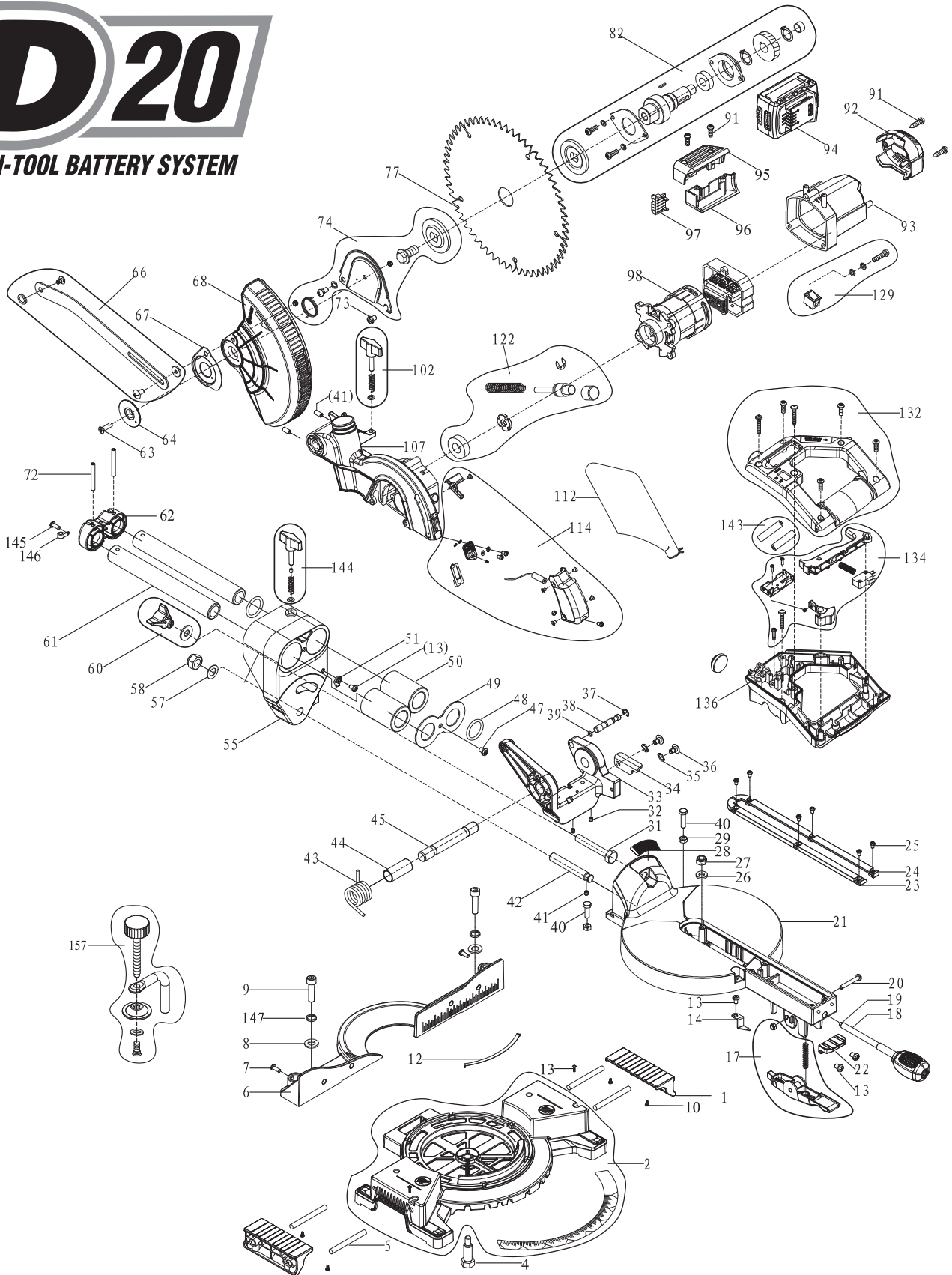
DRAPER[®]

20V 185mm BRUSHLESS SLIDING COMPOUND MITRE SAW



55588 - D20MS185 SPARE PARTS DRAWING

D20
MULTI-TOOL BATTERY SYSTEM



DRAPER[®]

20V 185mm BRUSHLESS SLIDING COMPOUND MITRE SAW



55588 - D20MS185 SPARE PARTS LISTING

D20

MULTI-TOOL BATTERY SYSTEM

| KEY No. | PART No. | STOCK No. | DESCRIPTION |
|---------|--------------|-----------|-------------------------------------|
| 1 | YD20MS185-1 | 98039 | Extension table (pair) |
| 2 | YD20MS185-2 | 98040 | Base |
| 4 | YD20MS185-4 | 98042 | The centre shaft of the turntable |
| 5 | YD20MS185-5 | 98043 | Extension pole |
| 6 | YD20MS185-6 | 98044 | Cross-bar |
| 7 | YD20MS185-7 | 98045 | M6x12 Cross pan head screw |
| 8 | YD20MS185-8 | 98046 | Ø10 Flat gasket |
| 9 | YD20MS185-9 | 98048 | M10x25 Socket head cap screw |
| 10 | YD20MS185-10 | 98049 | M5x8 Cross head self-tapping screw |
| 11 | YD20MS185-11 | 98050 | M5x55 Cross pan head screw |
| 12 | YD20MS185-12 | 98051 | Turntable sheet steel |
| 13 | YD20MS185-13 | 98054 | M5x8 Cross pan head screw |
| 14 | YD20MS185-14 | 98055 | Turntable pointer |
| 17 | YD20MS185-17 | 98056 | Limiting handle |
| 18 | YD20MS185-18 | 98057 | Turntable handle |
| 19 | YD20MS185-19 | 98058 | Turntable pad |
| 20 | YD20MS185-20 | 98059 | M5x35 Hex socket non-standard screw |
| 21 | YD20MS185-21 | 98060 | Turntable |
| 22 | YD20MS185-22 | 98061 | Extension block of turntable |
| 23 | YD20MS185-23 | 98062 | Auxiliary incision (left) |
| 24 | YD20MS185-24 | 98066 | Auxiliary incision (right) |
| 25 | YD20MS185-25 | 98067 | M4x8 Cross pan head screw |
| 26 | YD20MS185-26 | 98068 | Ø8 Big flat gasket |
| 27 | YD20MS185-27 | 98069 | M8 Locknut |
| 28 | YD20MS185-28 | 98070 | Mitre cutting scale |
| 29 | YD20MS185-29 | 98071 | M6 Hex nut |
| 31 | YD20MS185-31 | 98072 | M10x65 Hex head cap screw |
| 32 | YD20MS185-32 | 98073 | Ø5x35 Elastic cylindrical pin |
| 33 | YD20MS185-33 | 98074 | Head cover bracket |
| 34 | YD20MS185-34 | 98076 | Depth locating plate |
| 35 | YD20MS185-35 | 98077 | Ø8 Wave spring washer |
| 37 | YD20MS185-37 | 98078 | Ø8 Spindle circlip |
| 38 | YD20MS185-38 | 98079 | Head cover self-locking pin |
| 39 | YD20MS185-39 | 98080 | Ø7.5x1.9 "O"-rings |
| 40 | YD20MS185-40 | 98081 | M6x25 Hex head cap screw |
| 41 | YD20MS185-41 | 98082 | M6x10 Hex socket set screw |

| KEY No. | PART No. | STOCK No. | DESCRIPTION |
|---------|---------------|-----------|--|
| 42 | YD20MS185-42 | 98083 | Rotatory spindle |
| 43 | YD20MS185-43 | 98084 | Big torsional spring |
| 44 | YD20MS185-44 | 98085 | Torsional spring sleeve |
| 45 | YD20MS185-45 | 98087 | Head cover pin |
| 47 | YD20MS185-47 | 98088 | M6x8 Cross pan head screw |
| 48 | YD20MS185-48 | 98089 | Ø31xØ24.6x3.2 "O"-rings |
| 49 | YD20MS185-49 | 98090 | Bearing cover |
| 50 | YD20MS185-50 | 98091 | Ø40xØ25x58 Linear bearing |
| 51 | YD20MS185-51 | 98092 | Mitre cutting pointer |
| 55 | YD20MS185-55 | 98093 | Turntable bracket |
| 57 | YD20MS185-57 | 98094 | Ø12 Flat gasket |
| 58 | YD20MS185-58 | 90422 | M12 Locknut |
| 60 | YD20MS185-60 | 90722 | Bracket lock handle & gasket |
| 61 | YD20MS185-61 | 90810 | Retractable bar |
| 62 | YD20MS185-62 | 90576 | Retractable bar rear cover |
| 63 | YD20MS185-63 | 92225 | M6x20 Cross countersunk head screw |
| 64 | YD20MS185-64 | 93340 | Ring |
| 65 | YD20MS185-65 | 93366 | ST4.8x45 Cross head self-tapping screw |
| 66 | YD20MS185-66 | 93382 | Connecting rod |
| 67 | YD20MS185-67 | 93391 | Small cap |
| 68 | YD20MS185-68 | 93423 | Transparent cover |
| 72 | YD20MS185-72 | 96484 | Ø5x45 Elastic cylindrical pin |
| 73 | YD20MS185-73 | 96485 | M6x10 Cross head self-tapping screw |
| 74 | YD20MS185-74 | 96486 | Big cap assembly |
| 77 | YD20MS185-77 | | Saw blade |
| 82 | YD20MS185-82 | 96487 | Output shaft assembly |
| 91 | YD20MS185-91 | 96914 | ST3.9x12 Cross head self-tapping screw |
| 92 | YD20MS185-92 | 97045 | Housing back cover |
| 93 | YD20MS185-93 | 97046 | Housing |
| 94 | | | Battery pack |
| 95 | YD20MS185-95 | 97047 | Battery pack seat assembly |
| 98 | YD20MS185-98 | 97048 | Motor and motor controller |
| 102 | YD20MS185-102 | 97049 | Depth control handle assembly |
| 107 | YD20MS185-107 | 97050 | Head cover |
| 112 | YD20MS185-112 | 97051 | Dust bag |
| 114 | YD20MS185-114 | 97052 | Laser assembly |

Helpline: +44 (0) 23 8049 4344 Sales Desk: +44 (0) 23 8049 4333 General Enquiries: +44 (0) 23 8026 6355 internet: drapertools.com email: sales@drapertools.com

**DRAPER**[®]

20V 185mm BRUSHLESS
**SLIDING
COMPOUND MITRE
SAW**



55588 - D20MS185 SPARE PARTS LISTING



D20
MULTI-TOOL BATTERY SYSTEM

| KEY No. | PART No. | STOCK No. | DESCRIPTION |
|---------|---------------|-----------|---|
| 122 | YD20MS185-122 | 97053 | Brake block assembly |
| 129 | YD20MS185-129 | 97055 | Laser switch assembly |
| 132 | YD20MS185-132 | 97056 | Handle cover assembly |
| 134 | YD20MS185-134 | 97057 | Switch assembly |
| 136 | YD20MS185-136 | 97058 | Handle |
| 143 | | | Battery |
| 144 | YD20MS185-144 | 97059 | Lock nut head |
| 145 | YD20MS185-145 | 97060 | ST4.8x12 Cross head self-tapping screw (flat) |

| KEY No. | PART No. | STOCK No. | DESCRIPTION |
|---------|---------------|-----------|----------------------------|
| 146 | YD20MS185-146 | 97061 | Small clip |
| 147 | YD20MS185-147 | 97062 | Ø8 Spring washer |
| 148 | YD20MS185-148 | 97063 | M5x12 Cross pan head screw |
| 149 | YD20MS185-149 | 97064 | Ø6 Flat washer |
| 150 | YD20MS185-150 | 97065 | Jaw iron (pressure plate) |
| 151 | YD20MS185-151 | 97066 | Clamp locating lever |
| 152 | YD20MS185-152 | 97067 | Hand wheel |
| 157 | YD20MS185-157 | 97068 | Clamp assembly |