

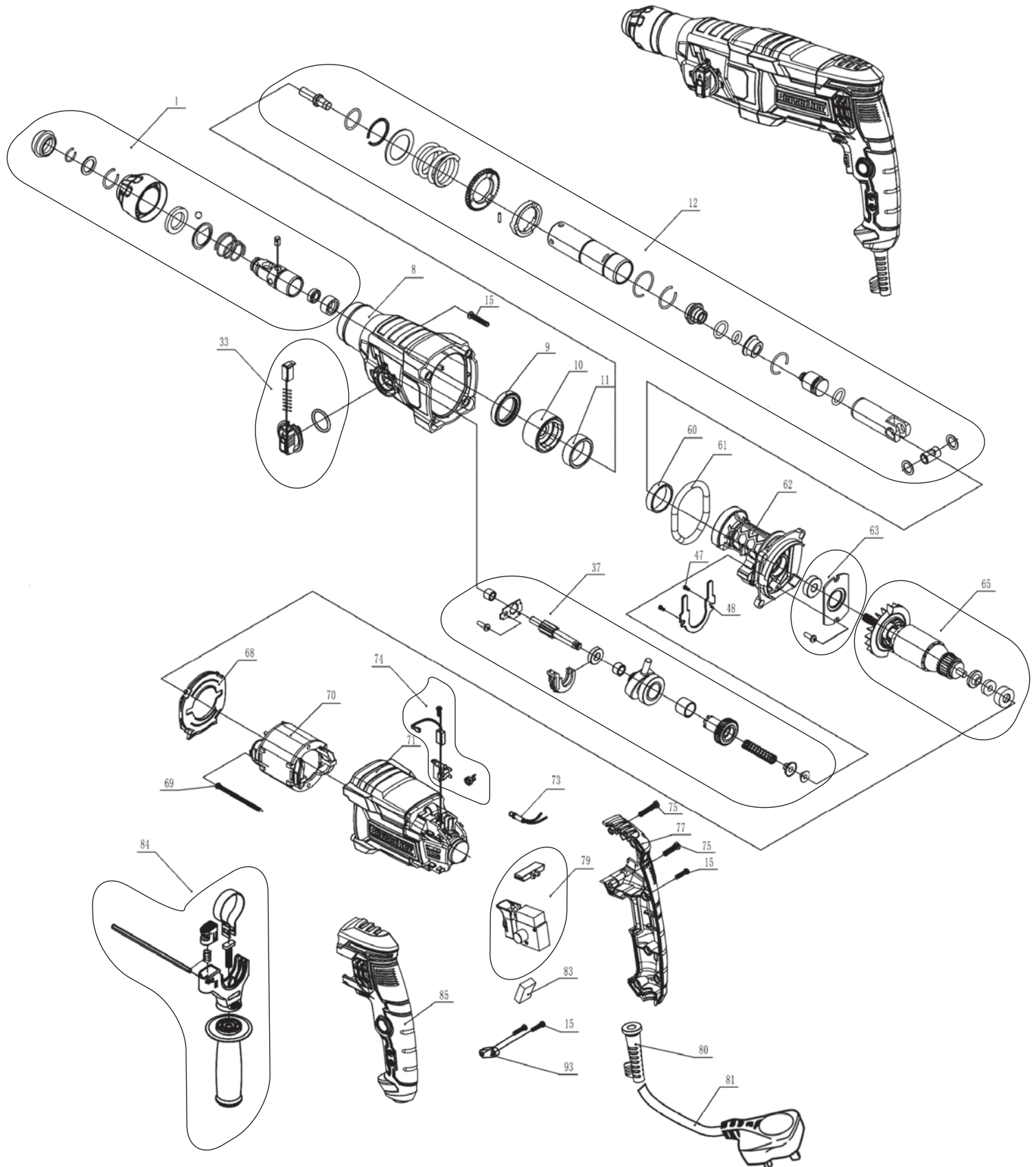
**DRAPER**®

230V 3.4KG

GB

# SDS+ ROTARY HAMMER DRILL

56382 - SDSHD1050D SPARE PARTS DRAWING



**DRAPER**<sup>®</sup>

230V 3.4KG

# **SDS+ ROTARY HAMMER DRILL**



56382 - SDSHD1050D SPARE PARTS LISTING

KEY No.	PART No.	STOCK No.	DESCRIPTION
1	YSDSHD1050D-1	97535	Front end assembly
8	YSDSHD1050D-8	97542	Cylinder case
9	YSDSHD1050D-9	97543	Oil Seal
10	YSDSHD1050D-10	97544	Needle bearing holder
11	YSDSHD1050D-11	97545	Needle bearing 301237
12	YSDSHD1050D-12	97546	Cylinder assembly
15	YSDSHD1050D-15	97549	Slotted screw ST3.9X20
33	YSDSHD1050D-33	97567	Selector knob assembly
37	YSDSHD1050D-37	97571	Gear assembly
47	YSDSHD1050D-47	97581	Hex. Skt HD. bolt M5X14
48	YSDSHD1050D-48	97582	Bearing board
60	YSDSHD1050D-60	97594	Steel sleeve
61	YSDSHD1050D-61	97595	Gasket
62	YSDSHD1050D-62	97596	Aluminium stents
63	YSDSHD1050D-63	97597	Bearing assembly
65	YSDSHD1050D-65	97599	Rotor assembly
68	YSDSHD1050D-68	97602	Fan Guide
69	YSDSHD1050D-69	97603	Self-tapping Screws
70	YSDSHD1050D-70	97604	Stator
71	YSDSHD1050D-71	97605	Rotor housing
73	YSDSHD1050D-73	97607	Inductance
74	YSDSHD1050D-74	97608	Brush assembly
75	YSDSHD1050D-75	97609	Slotted screw ST3.9X30
77	YSDSHD1050D-77	97611	Handle cover
79	YSDSHD1050D-79	97613	Switch assembly
80	YSDSHD1050D-80	97614	Cable cover
81	YSDSHD1050D-81	97615	Cable
83	YSDSHD1050D-83	97617	Electric capacity
84	YSDSHD1050D-84	97618	Auxiliary handle
85	YSDSHD1050D-85	97619	Left handle
93	YSDSHD1050D-93	97620	Cable board

KEY No.	PART No.	STOCK No.	DESCRIPTION