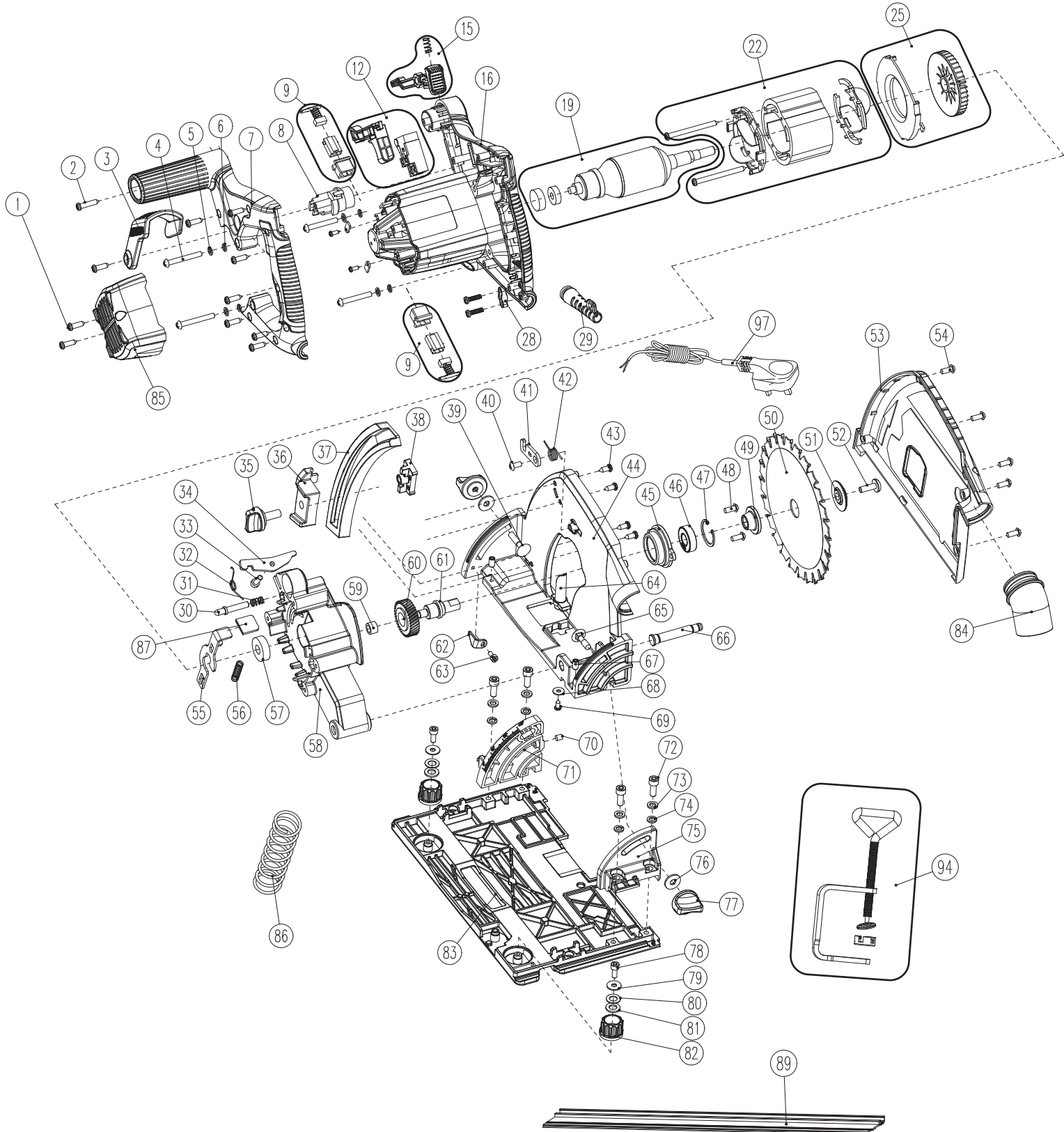


230V 165MM

# PLUNGE SAW

57341 - PS1200D SPARE PARTS DRAWING



**DRAPER**<sup>®</sup>

230V 165MM

# PLUNGE SAW

57341 - PS1200D SPARE PARTS LISTING

KEY No.	PART No.	STOCK No.	DESCRIPTION
1	YPS1200D-1	98112	Cross recessed pan head tapping screws ST4,1x16-F (set)
2	YPS1200D-2	98113	Cross recessed pan head tapping screws ST4,1x32-F (set)
3	YPS1200D-3	98114	Locking handle
4	YPS1200D-4	98115	Cross recessed pan head screw M5x45 (set)
5	YPS1200D-5		Small Washer
6	YPS1200D-6		Light spring washer
7	YPS1200D-7	98118	Handle
8	YPS1200D-8	98119	Locking wheel
9	YPS1200D-9	98120	Carbon brush assembly (pair)
12	YPS1200D-12	98123	Switch assmebly
15	YPS1200D-15	98126	Trigger lock assembly
16	YPS1200D-16	98127	Casing
19	YPS1200D-19	98130	Armature assembly
22	YPS1200D-22	98133	Stator assembly
25	YPS1200D-25	98136	Fan assembly
28	YPS1200D-28	98139	Pressure plate
29	YPS1200D-29	98140	Power cord jacket
30	YPS1200D-30	98141	Lift lock pin
31	YPS1200D-31	98142	Lifting lock pin spring
32	YPS1200D-32	98143	Extension table limit bar spring
33	YPS1200D-33	98144	Hexagon socket head cap screws m5x20
34	YPS1200D-34	98145	Lift limit board
35	YPS1200D-35	98146	Lifting block lock knob
36	YPS1200D-36	98147	Lifting indicator block
37	YPS1200D-37	98148	Depth ruler
38	YPS1200D-38	98149	Lifting indicator block
39	YPS1200D-39	98150	Large round head square neck bolt m6x33
40	YPS1200D-40	98151	Cross recessed flat head machine screw m5x12
41	YPS1200D-41	98152	Body locking piece
42	YPS1200D-42	98153	Torsion spring
43	YPS1200D-43	98154	Cross recessed pan head tapping screws st4,1x12-f
44	YPS1200D-44	98155	Fixed guard
45	YPS1200D-45	98156	Gear box cover
46	YPS1200D-46	98157	Ball bearings 6001-2rs (40x17x12)
47	YPS1200D-47	98158	Hole retaining ring 28
48	YPS1200D-48	98159	Cross recessed pan head self-tapping locking screw m5x12

KEY No.	PART No.	STOCK No.	DESCRIPTION
49	YPS1200D-49	98160	Saw blade holder
50			Saw blade (φ165)
51	YPS1200D-51	98161	Saw blade pressure plate
52	YPS1200D-52	98162	Hexagon flat round head screw m8x20
53	YPS1200D-53	98163	Fixed hood cover
54	YPS1200D-54	98164	Cross recessed pan head self-tapping locking screw m4x12
55	YPS1200D-55	98165	Shaft lock wrench
56	YPS1200D-56	98166	Shaft lock spring
57	YPS1200D-57	98167	Bearing 6000 rs (8x22x7)
58	YPS1200D-58	98168	Gearbox
59	YPS1200D-59	98169	Oil bearing
60	YPS1200D-60	98170	Big gear
61	YPS1200D-61	98171	Output shaft
62	YPS1200D-62	98172	Rotating scale pointer
63	YPS1200D-63	98173	Hexagon socket head cap screws m4x6
64	YPS1200D-64	98174	Lift spring seat
65	YPS1200D-65	98175	Hexagon socket head cap screws m6x22
66	YPS1200D-66	98176	Gear box shaft
67	YPS1200D-67	98177	Hexagon flat head set screw m6x12
68	YPS1200D-68	98178	Large washer 4
69	YPS1200D-69	98179	Cross recessed pan head self-tapping screws st3,5x9-f
70	YPS1200D-70	98180	Hexagon flat head set screw m6x6
71	YPS1200D-71	98181	Front corner bracket
72	YPS1200D-72	98182	Hexagon socket head cap screw m6x20
73	YPS1200D-73	98183	Small washer 6
74	YPS1200D-74	98184	Light spring washers 6
75	YPS1200D-75	98185	Rear corner bracket
76	YPS1200D-76	98186	Large washer 6
77	YPS1200D-77	98187	Corner bracket locking knob
78	YPS1200D-78	98188	Hexagon socket head cap screw m5x12
79	YPS1200D-79	98189	Large washer 5
80	YPS1200D-80	98190	Large washer 8
81	YPS1200D-81	98191	Small washer 8
82	YPS1200D-82	98192	Track gap adjustment knob
83	YPS1200D-83	98193	Floor
84	YPS1200D-84	98194	Dust tube

Helpline: +44 (0) 23 8049 4344 Sales Desk: +44 (0) 23 8049 4333 General Enquiries: +44 (0) 23 8026 6355 internet: drapertools.com email: sales@drapertools.com

Draper Tools Limited, Hursley Road, Chandler's Ford, Eastleigh, Hampshire. SO53 1YF UK.

TAKC0219

