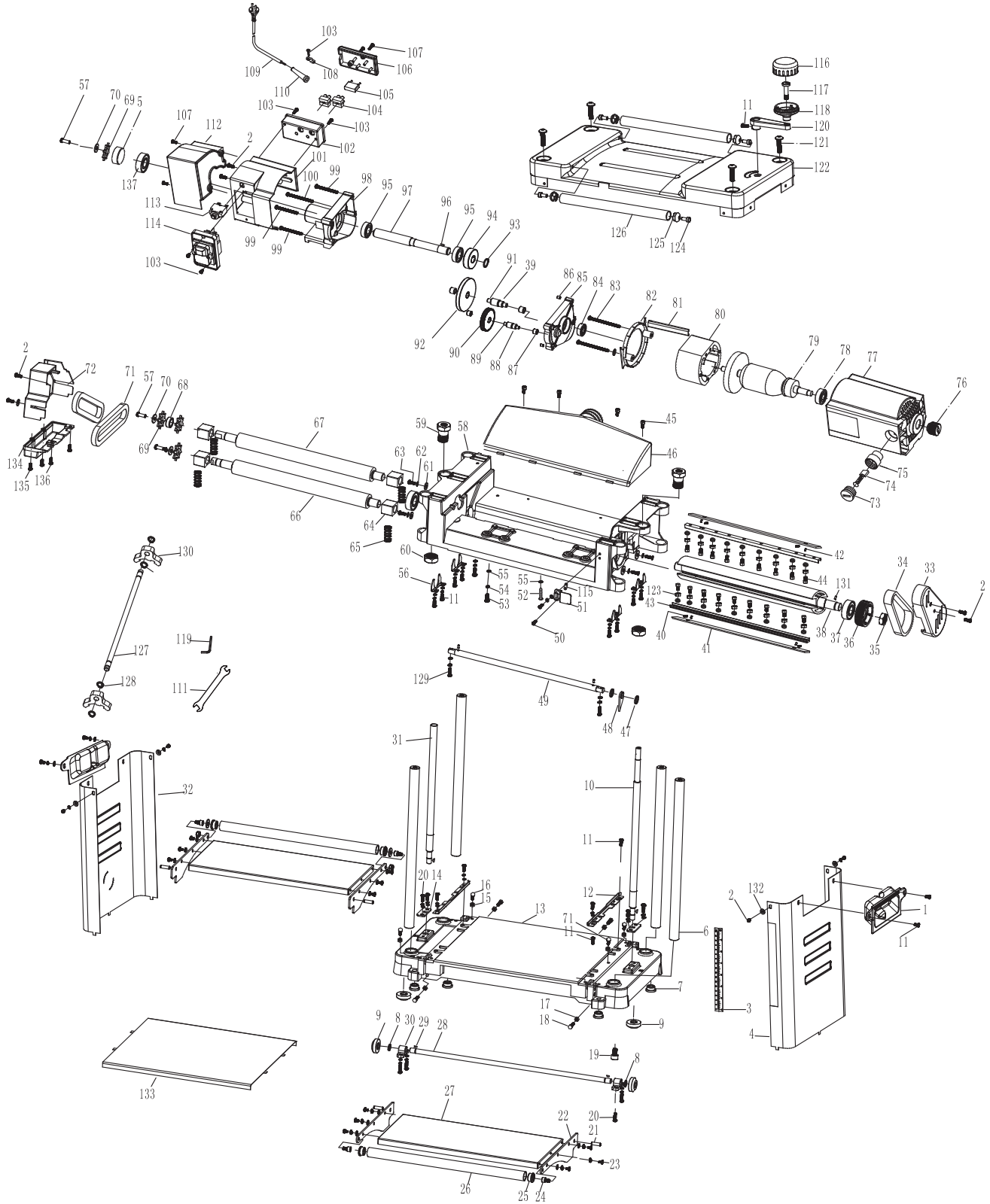


230V 330mm

PLANER THICKNESSER

89156 – PT2000D SPARE PARTS LISTING





230V 330mm

PLANER THICKNESSER

89156 – PT2000D SPARE PARTS LISTING

KEY No.	PART No.	STOCK No.	DESCRIPTION	
1	YPT2000D-A1	28381	Side handle assembly (pair)	
11				
3				(NP) Staff gauge
4				(NP) Right board cover
5				(NP) Shaft sleeve 1
6				(NP) Guide rod
7				(NP) Rubber feet
8	YPT2000D-A9	28383	Bevel gear shaft assembly	
9				
19				
20				
28				
29				
30				
9	YPT2000D-9	28384	Bevel gear	
10	YPT2000D-10	28385	Right lead screw	
12			(NP) Orientation plank	
13			(NP) Base plate	
14			(NP) Screw clamp	
15			(NP) Hex nut (M5)	
16			(NP) Hexagon bolt (M5x20)	
17			(NP) Hex nut (M6x16)	
18			(NP) Hexagon bolt (M6)	
21			(NP) Elastic cylindrical pin (Φ6x30)	
22			(NP) Support feet	
23			(NP) Cross pan head tapping screw (M4x6)	
24			(NP) Inner hexagon screw (M6x10)	
25			(NP) Plug	
26			(NP) Roll pole	
27			(NP) Extension plate	
31	YPT2000D-31	28386	Left lead screw	
32			(NP) Left board cover	
33	YPT2000D-A33	28394	Belt cover assembly	
2				
34	YPT2000A-34	28396	PJ Belt (e=2.34)	
35			(NP) Thin nut (M16x1.5)	
36	YPT2000D-36	28398	Pulley wheel	

KEY No.	PART No.	STOCK No.	DESCRIPTION			
37	YPT2000D-38	28399	Knife shaft assembly			
38						
42						
43						
44						
131						
123						
40						
41				YPT2000D-41	28400	Knife blade (pair)
45				YPT2000D-A46	28401	Dust cover assembly
46						
47	YPT2000D-A49	28402	Bounce back axis assembly			
48						
49						
129						
50						(NP) Cross pan head tapping screw (M4x20)
51			(NP) Pointer			
52			(NP) Cross pan head tapping screw (ST6x16)			
53			(NP) Inner hexagon screw (M6x16)			
54			(NP) Spring washer (Φ6)			
55			(NP) Flat washer (Φ6)			
56			(NP) Bearing press plate			
57			(NP) Inner hexagon screw (M6x16)			
58			(NP) Engine body			
59			(NP) Non-standard nut			
60			(NP) Hex nut (M20x1)			
61	YPT2000D-A63	28407	Cross recessed countersunk head screw (M5x12)			
62						
63						
65	YPT2000D-65	28411	Pressure spring			
64	YPT2000D-A66	28413	Iron roller assembly			
66						
67	YPT2000D-67	28416	Roller shaft assembly			
64						
68						(NP) Adjusting sleeve



230V 330mm

PLANER THICKNESSER

89156 – PT2000D SPARE PARTS LISTING

KEY No.	PART No.	STOCK No.	DESCRIPTION
69	YPT2000D-A69	28418	Chain wheel
70			
71	YPT2000D-71	28419	Chain (pair)
72			(NP) Thick flat mat
73	YPT2000D-A74	28421	Brush assembly
74			
75			
73	YPT2000D-A79	28422	Motor assembly
74			
75			
76			
77			
78			
79			
80			
81			
82			
83	YPT2000D-A98	28423	Gear assembly
39			
84			
85			
86			
87			
88			
89			
90			
91			
92			
93			
94			
95			
96			
97			
98			
99			
100			
137			

KEY No.	PART No.	STOCK No.	DESCRIPTION
101			(NP) Back cover
102			(NP) Connection seat
104			(NP) Amphenol connector
105	YPT2000D-105	28427	Capacitor (0.22uf)
106			(NP) Junction box
107			(NP) Cross pan head tapping screw (ST4.2x16)
108			(NP) Tension disc
109			(NP) Cable
110			(NP) Cable sheath
111			(NP) Open spanner
112			(NP) Back cover end plate
113	YPT2000D-105	28429	Overload protector
114	YPT2000D-113	28432	Switch assembly
103			
115			(NP) Pointer washer
11	YPT2000D-A120	28433	Handle assembly
116			
117			
118			
120			
119			(NP) Belt cover
121	YPT2000D-A121	28434	Socket head cap (M8x12)
122			(NP) Upper cover plate components
124			(NP) Pin
125			(NP) Plug 1
126			(NP) Roller rod 1
127	YPT2000D-A127	28435	Knife gauge shaft assembly
128			
130			(NP) Washer
132			(NP) Bottom Panel
134			(NP) Chain cover protect plate
135			(NP) Cross pan head tapping screw (ST4x13)
136			(NP) Cross countersunk head screw (M5x12)